

# AVIATION AUCTION

*Absolute  
Auction*

**FRIDAY & SATURDAY ~ JUNE 22<sup>nd</sup> & 23<sup>rd</sup>, 2012**  
**Starting at 9:00 AM BOTH DAYS!**

**New Inventory Surplus to Ongoing Needs of**

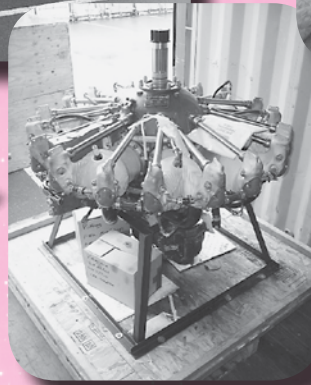
**VIKING\***

Auction being held at 4905 77th Ave S.E. ~ Calgary Alberta, Canada

**AIRLINE  
CONNECTIONS**

Most Airlines into Calgary  
 Alberta Int'l Airport.

**OPEN HOUSE: Open House & Pre-Registration**  
**Thursday, June 21<sup>st</sup> - 9:00 A.M. - 5:00 P.M.**



**SALE SITE NUMBER:**  
**Steve Starman**  
**(402) 681-6456**  
 or  
**Scott Moore**  
**(414) 681-3652**

**This Auction will include 8,300 Line Items of NEW  
 DeHavilland & Misc. Inventory**

**STARMAN BROS. AUCTIONS INC.**

1240 Royal Drive ~ Papillion, NE 68046  
 4901 E Falcon Drive ~ Mesa, AZ 85215  
 (402) 592-1933 ~ (480) 396-0380

**HOTELS:**

Glenmore Inn &  
 Convention Center  
 2720 Glenmore Trail SE  
 (403) 279-8611

Service Plus Inns  
 3503 114<sup>th</sup> Ave SE  
 (403) 256-5352

Roadking Inns  
 4949 Barlow Trail SE  
 (403) 273-4949

Deerfoot Inn & Casino  
 11500 35<sup>th</sup> St SE  
 (403) 236-7529

Sandman Signature Hotel  
 8001 11<sup>th</sup> St SE  
 (403) 252-7263

*Check Out Our Web Site...*  
[www.starmanauctions.com](http://www.starmanauctions.com)

# DASH 7 INVENTORY

Approx. 2,100 Line Items of New & O/H Dash 7 Inventory to Include Ground Spoiler Assys., Aileron Assys., Wing Tips, Rudder Assy, Horizontal Stabilizer Assy., Passenger Seats, Packer Oil Coolers, Fuel Shut-Off Kits, Jack Screw Kits, Fire Extinguisher Kits, Proximity Floor Lighting Kits, Left & Right Leading Edge Kits, Tail Strut Kits, Elevator Fairing Kits, Nose Wheel Centering Spring Kit, Fuel Flow Kits, Cabin Air Flow Trimming Retrofix Kits, Bleed Air Lines & Hoses, Exhaust Ducts, Exhaust Duct Fairings, Engine & FCU Control Levers, Engine Control Cables, Engine Drain Tubes, Engine Cowl Seals, Brackets & Latches, Control Surface Leading Edge Skins, Flap Ribs, Flap Access Covers, Flap Track Arm Assys., Hinge Assys., Flap Skins, Aileron Balance Weights, Aileron Hinges, Geared Tab Assys., Wing Bird Splitting Inv., Wing Panels & Ribs, Wing Seal Retainers, Wing Leading Edge Skins, Heat Shield Plates, Sub Assy Panels, Wing Access Panels, Wing Fuel Access Panels, Wing Fence Inv., Wing Spar Fittings, Flap Track Assys., Spar Support Angle, Flap Fairings, Windshield Seals, Aft Window Assy., Rudder Skins, Fuselage/Stabilizer Doublers, Vertical Stabilizer Angles & Inv., Elevator Fairings, Elevator Hinges & Fittings, Elevator Access Covers, Vortex Generators, MLG Door Stop, Nacelle Doublers, Inlet Scoops & Intake Ducts, Formers, Nacelle Fittings & Longerons, Clamps, Retaining Rings, Tail Cone Frames, Cargo Floor Ramp Assy., Cargo Door Sill Guard, Cargo Door Reinforcing, Cargo Door Rub Strips, Cargo Floor Panels, Baggage Door Inv., Fuselage Ice Shield, Seat Rails, Seat Sub Assys., Seat Brackets, Side Rails, Air Stair Door Angles & Surrounds, Air Stair Door Frame, Drag Stay Fittings, Flight Deck Floor Window, Flight Deck Floor Panels, Wheel Well Skins & Fittings, Pressure Bulkhead Angles, Air Stair Door Sealing System Tube, Main & Nose Landing Gear Door Brackets, Angles & Supports, Door Handles, Air Stair Door Struts, Steps & Supports, Battery Trays, Oxygen Tubes, Pitot Static Valve & Tubes, Nose Wheel Bushings, L/G Emergency Cables, L/G Torque Tubes, Gravel Guards, Fire Extinguisher (Core), De-Ice Tubes, Hydraulic Tubes & Lines, Fuel System Tubes, Bearings & Retainers, Fork Ends & Pulleys, Chain Assys., Fire Detection Inv., Lavatory Door Knobs, Signs & Door Trades, Waste Container, Lighting & Light Guards, Interior Panels & Trim, Armrests & Fairings, Cup Holders, Wheel & Brake Inv., Placards of All Types, Specialty Tooling & Pogo Sticks, Etc.



*New Fuel & Hyd Brake Lines*

# BEAVER INVENTORY



*Beaver & Otter Flaps & Ailerons, A/R*



*Hamilton Standard Beaver Prop*



*Beaver & Otter Rudders & Verticals, A/R*

- Rebuilt Beaver Fuselage w/Data Plate S/N 170
- Full Set of Landing Gear w/Cleveland Wheel & Brakes, A/R
- Approx. (10) Steel Main Landing Gear, A/R
- (2) Sets of MLG w/Goodyear Wheels, Brakes & Tires, A/R
- (20) Brake Calipers (Double & Triple Puck Style), A/R
- Master Cylinders, A/R
- (2) Tail Wheel Struts, A/R
- (4) Rudders, A/R
- (6) Flaps, A/R

- Complete R-985 Cowling Lower & Top Cowl, A/R
- Dish Pans, A/R
- (2) 985 Mounts, A/R
- Dual Control Yokes & Inv., A/R
- (2) L20 Pilot Seats, A/R
- (4) Sets of Baggage Frames, A/R
- (3) Cabin Doors, A/R
- Leading Edge Stol Kit

- Float Fittings
- (12) Dash Panels, A/R
- (2) Oil Tanks, A/R
- Oil Coolers, A/R
- Wing Tips, A/R
- 3-Place Bench Seat w/L20 Attach Points, A/R
- L20 & Misc Passenger Seats, A/R



*Beaver Vertical Fin & Cowling*



- (17) Wings, A/R, Some Have Damage
- Tail Wheels & Tires, A/R
- Elevator
- (3) Vertical Fins, A/R
- (8) Turbo Piston Beaver Vento Fins, A/R

- New & O/H Beaver Inv to Include L/G Repair Kit, Ski Axles, Ski Fittings, MLG & Tow Kit, Sliding Window Kits, Rudder Pedal Assys., Shuttle Valve Assys., Winter Paddles
- Flap Ribs, Ailerons Skins, Wing Ribs, Bushings, Wing Stringers, Wing Spar Plates, Wing Skins, Wing Spar Sections, Tail Wheel Ski Inv., Handles, Ventral Fin, Float Access Panels, Ladder Inv., Water Rudder Cables, Amphibian Nose Gear Spacers, Amphibian Spacers & Inv., Brake Inv., L/G Bushings & Seals, Elevator Hinge, Elevator Trim Tab Skins & Brackets, Tail Cone Access Panels & Inv., Wing Tip Ribs, Fuel Filters & Fuel Drain Inv., Fuel Filler Necks, Long Range Fuel Tank Valve Assy., Cables & Hoses, Rudder Lock, Oil Sump Gaskets, Floor Panels, Jack Points, Fuselage Formers & Channels, Placards, Bearing Plates, Window Retainers, Seat Lock Plates, Door Skins, Roof Stiffeners, Door Frame, Cargo Door Hinge Support, Door Hinges & Supports, Cargo Door Strap, Cabin Air Scoops, Seals, Placards & Decals, Engine Mount Fittings, Exhaust Flanges, Exhaust Stacks & Segments, Exhaust Lugs, Cowling Panels, Fire Shield, Foot Well Assys., Torque Tubes, Brake Line Brackets, Rudder Pedal Supports, Cable Pulleys & Drums, Aileron Chains, Engine Control Brackets & Levers, Fuel Selector Cable Guard, Mixture Levers, Quadrant Inv., Bearings & Hardware, Flap Jack Ramps, Shims, Sprockets, Packing, Knobs & Interior Inv., Angles & Stringers for Various Stations, Exhaust, Blankets & More!



## OTTER INVENTORY

Otter Landing Gear Legs & Inv, A/R  
R/H Forward Main L/G Attach Leg  
Tail Wheel Steering System, A/R  
Tail Wheel Steering Motor, A/R  
(6) L/H & R/H Elevators

Trailing Flaps  
(2) Forward Flaps  
(6) Stol & Standard Wing Tips, A/R  
Pair of Wing Struts, A/R  
Rudders

(2) Cockpit Doors, A/R  
Augmentor Tubes  
Complete 1340 Cowling, A/R  
Cowling, A/R  
Engine Baffles  
3-Blade Prop, A/R

New & O/H Otter Inv. to Include Airframe Reinforcement Kits, Wing Cover Plate Kit, Brake Calipers, Ladder Assy., Exhaust Pipe Assys & Tubes, Exhaust Brackets, Janitrol Air Valve, Wing Ribs, Flap Bracket, Flap Spacers, Flap Ribs, Fittings & Plates, Wing Shroud Angles, Wing Tip Stiffeners, Wing Leading Edge Skins, Wing Spar Angles, Wing Stiffeners, Wing Shroud Skins, Wing Fence Inv., Tail Wheel Hardware, Main & Tail Wheel Ski Inv., Float Brackets, Amphibian Fairings, Float Plates & Inv., Water Rudder Welds, Ventral Fin Skins, Water Rudder Cables, Amphibian Castings, Drag Strut Bushings, Compression Rudder Strut, Trim Tab Skins, Rudder Ribs & Spars, Trim Tab Brackets, Fuel Sump Banjo Assy., Fuel Lines & Fittings, Ladder Tubing, Float Ladder Brackets & Inv., Fuselage Formers, Door Hinges, Door Handle Guards, Cargo Door Strike Plates, Cabin Door Brackets, Bearing Housings, Control Surface Plates & Brackets, Fuselage Strut Saddle Plates, Inner Door Skin, Door Channels & Felt Seal, Bulkhead Assys., Windshield Retainers, Cabin Air Scoops, Cabin Window Trim, Seat Welds & Repair Inv., Cowling Hinges & Brackets, Fire Seal, Ducts & Tubes, Chain & Cables, Piston Assys., Water Rudder Drum Assy., Control Rods, Prop Seals, Cable Guards, Specialty Hardware, Bearings, Springs, Control Column Covers, Spacers, Control Column Beams, Baffles, Gaskets, Channels, Rear Roof Ribs, Escutcheons, Formers, Etc.

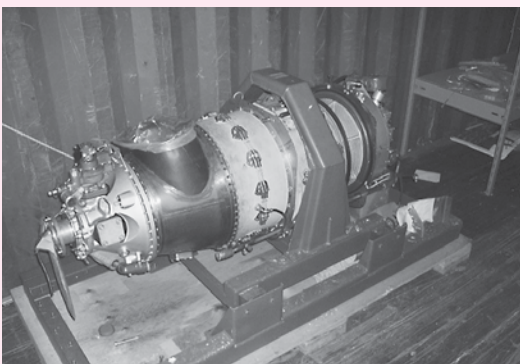
## TWIN OTTER INVENTORY

New Twin Otter Inventory to Include Step Kits, Oil Breather Kit, Generator Overheat Kits, NLG Fork Tube, Cockpit Wiring Kits, Nose Fork Kits, Aileron Servo Kits, Torque Computers, Aft Cargo Nets, Strobe Light Assys., Flap Cases, Top Hat Assys., Cargo Door Shear Plates, Wiring Assys., Engine Nacelle Plates, Flap Doublers, Flap Ribs, Aileron Hinges, Access Doors, Fairings, Nacelle Formers, Nacelle Skins, Landing Light Covers, Wing Ribs, Wing Skins, Ducting, A/C System Inv., Heating & Ventilation Ducting, Ski Plates & Fittings, Float Strut Brackets & Angles, Float Fairings, Cargo Ladder Brackets, MLG Fairing Angles, Float Lugs, Jack Pads, NLG Hub Caps, Wheel Spacers, MLG Doublers, Rudder Spars & Ribs, Rudder Caps, Elevator Spars & Ribs, Oxygen Tubes & Inv., Indicators, Cable Assys., Fuel System Tubing & Vents, Battery Box Brackets, Placards & Labels, Instrument Panel Brackets, Pitot Tube Brackets, Hyd. Tank Caps, Hyd. Pipes, Cargo Door Skin, Gussets, Air Stair Door Tread, Air Stair Door Plates, Air Stair Door Angles & Brackets, Cargo Door Channels, Seat Rails, Seat Pans, Seat Frames, Cabin Skins, Specialty Hardware, Lighting & Brackets, Window Sills & Seal, Rudder Support Brackets, Fuselage Bulkheads, Cockpit Brackets & Panels, Cockpit Door Inv., Lighting Strips, Fuselage Nose Channels, Pilots Seat Cushions, Interior Panels, Cargo Door Ladder Inv., PT-6 Drain Pipe, Flap Bell Cranks, Gust Lock Rods & Inv., Throttle Quadrant Knobs & Covers, Fairings, Flanges, Quadrant Assys., Prop Pitch Cams, Detent Arms, Jumper Straps, Conduit, Control Surface Bushings, Specialty Hardware, Etc.

## HARDWARE

2,000+ Line Items of Hardware to Include Hi-Lock Bolts, Hi-Lock Pins & Collars, Anchor Nuts, Ball Bearings, Sealed Bearings, Hose Fittings, Hyd. Hose, MS Solid Rivets, Self Locking Nuts, Dowel Pins, Shear Pins, Retaining Rings, MS Screws, Hinge Stock, Internal Drive Bolts, Hinge Pin, Stainless Steel Nuts, Countersink Solid Rivets, MS Elbow & Tee Fittings, Safety Wire, Helicoil Inserts, MS Bolts, High Temp Bolts, Turn Buckle Inv., Terminal Studs, Machine Bolts, MS Screws, Adel Clamps, Hose Clamps, Springs, Cotter Pins, Washers, Packing & O-Rings, Boots, Fillister Head Screws, Grommets, Nicropress Sleeves, NAS Shear Bolts, NAS Washers, NAS Screws, NAS Bolts, Quick Release Pins, Rod Ends, NAS Stainless Bolts, Swage Lock Pins, Pulley Pins, Jam Nuts, Lock Washers, Bushings, Dzus Fastener Inv., Jo-Bolts, Rivnuts, Scat Hose, Nylon Tubing, Tinnerman Nuts, Bearing Races, Instrument Air Filters, Grease Seals, Canvas, Filter Elements, Polyethylene Tape, Garlock Inv., Shims, Cam Locks, Fire Sleeve, Welding Rod, Exhaust Studs, Velcro, AN Nuts & Bolts, Clevis Bolts, Eye Bolts, AN Fittings, BAC Solid Rivets, Blind Rivets, Etc.

## PT6A-114 SCHOOL ENGINE



P&W PT6A-114 Engine Complete w/Prop Governor, Fuel Pump & FCU. Note: No Logs & No Data Plate, Engine will be sold for Training Purposes Only.



## COMPLETE CESSNA 150M PROJECT

Cessna 150M Project Aircraft, Has Wing & Control Surface Damage



# ELECTRICAL & LIGHTING INVENTORY

Electrical & Lighting Inventory to Include Circuit Breakers, Landing Light Bulbs, Connectors, Toggle Switches, Micro Switches, Indicator Lights, Antenna Couplers, Bonding Straps, Wire Clamps, Receptacles, Canon Plugs, Terminal Lugs, Impact Switches, Resistors, Heat Shrink, Rheostats, Solenoids & Relays, Potentiometers, Strobe Flash Tubes, Coaxial Cable, Volt Meters, Nav Light Assys, Windshield Wiper Core, Miniature Lights, Sealed Beam Lights, Temp Probes, Terminals, EGT Indicators, Junction Boxes, Thermocouples, LED Landing Light, Strobe Power Supply, LED Position Lights, Flash Tubes, Back Shells, Various Transmitters, Cable & Wiring Kits, PC Boards, & More!

## FLOATS & INVENTORY



Set of Bristo Floats 679-4930 w/  
Rigging for Turbo Beaver, A/R

(2) Sets of Edo Air 58-4580 Floats  
(Barrels Only), A/R

Edo Amphibious Nose Forks, A/R  
(8) New Wipline Leading Edge  
Slats

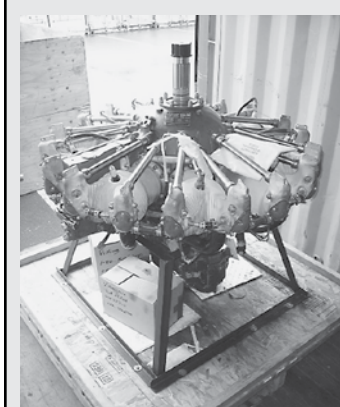
Wipline 13000 Straight Floats  
(Barrels Only w/Data Tag),  
A/R

Aluminum Float Ladders

New Edo 4930 Float Assy

New & Used Float Inventory to Include Oleos, Actuator Links, Tie Fittings, Float Fittings, Bumpers, Side Stiffeners, Amphibious Brake Linings, Bilge Pump Adapters, 7170 Swivels & Wire Pulls, Float Deck Fittings, Flying Wires, Amphibious Bushings, Float Ladder Inv., Amphibious Castings, Strut Assys., Spreader Bars, F24-PX Float Pumps, Green & Red Float Lenses, Etc.

## R-985 ENGINE & ACCESSORIES



NAX9E Carburetor Core  
1416 Starter Cores  
(3) 756 Starter Cores  
(3) R-985 & 1340 Generator  
Cores  
(3) SB9RU Magnetos  
Weldon Fuel Pumps  
Wet Vac Pump Cores  
Various Fuel Pumps  
R-985 Cowl Cover  
R-985 & 1340 Engine Baffles  
Radial Engine Exhaust Pipes &  
Blanks  
R-985 Oil Sump Gaskets  
Spark Plug Leads  
Fuel Selector Valves  
R-985 Rocker Drain Pipe  
Gaskets  
Push Rod Housing Packing  
(6) Hamilton Standard Prop  
Governors

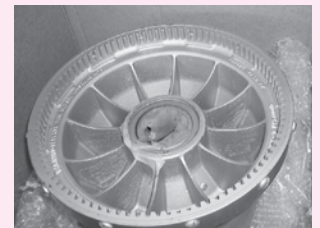
P&W R-985-AN-14B Engine  
Core, Removed for Time w/  
Logs, 1,234 Hrs. S.M.O.H.  
(5) R-985 & 1340 Oil Coolers  
NAR9B Carburetor Core

## PROPELLERS & WHEEL & BRAKE INVENTORY

Hamilton Standard 2D30-237 Prop w/6101A-12 Blades  
3-Blade Otter Prop  
Woodward Prop Synch Box P/N 213600  
(22) New 24 x 7.7 Tires



33-55 Brake Assys.



New Wheel Halves  
New Cleveland Brake Assys  
New Brake Linings & Pucks  
New Cleveland 164-06306 Brake Discs  
6.00 x 6 Wheel Assy  
New Bendix Brake Valve  
Various Other Wheel & Brake Inventory

## PT-6 INVENTORY

Various New & A/R PT-6 Inventory to Include Fuel Nozzles, Fuel Nozzle Sheaths, Filter Kits & Elements, Thermocouples, Seals, Hardware, Tubes, Exhaust Duct, Prop Governor, Specialty Tools, Starter/Generator, QAD Kit, Bleed Valve Diaphragm, Etc



**NOTE: FOR A COMPLETE  
DETAILED LISTING VISIT  
[WWW.STARMANAUCTIONS.COM](http://WWW.STARMANAUCTIONS.COM)  
AND CLICK ON UPCOMING AUCTIONS  
OR CALL (402) 592-1933.**





# SHOP EQUIPMENT & TOOLS



- (2) Meyers 36" 3-Ton Aircraft Jacks
- (3) 32" 5-Ton Aircraft Jacks
- Magnaflux FM-120 Eddy Current Tester
- Barfield 2643F Fuel Tqy Test Set



- (2) B-1 Maintenance Stands
- Inspection Instrument Mdl AP/04 Alcoprobe-S
- Eddy Current Test Set w/Various Probes & Standards

- Spectrum Dynamics Corp. Mdl SD119B Trim Balance Analyzer
- Fenwall Mdl 80001-0 Thermostat Test Set
- Alco EGT Test Set
- TIF-5000 Leak Detector
- Minigas Portable 4-In-1 Multi-Gas Monitor
- Wheat Stone Bridge
- Warren-Knight 23-1990 Prop Protractor
- Chatillon Spring Scales
- (2) Cherry Huck Guns G685-BS
- Cherry Huck Gun G85-DS
- PWC T5 Thermocouple Fixture
- PWC Puller & Wrench
- Grease Guns
- Various Specialty Tools
- PWC Combustion Chamber Puller

# INSTRUMENTS & AVIONICS

(40+) Instrument Cores to Include Turn & Banks, Altimeters, Gyros, Amp Meters, Air Speed Indicators, 3-In-1 Gauges, Fuel Gauges, Manifold Pressure Indicators, Carburetor Air Temp, Altitude Encoder, Etc.

- New Antennas
- New Antenna Couplers
- New Antenna Coaxial Cable

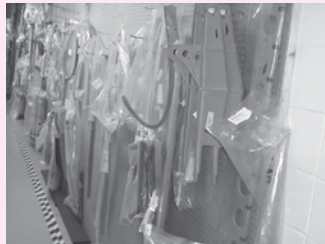
- New Oxygen Mask Microphone
- (2) Accelerometer Cores

- Aerometer Plus Kit
- Headset
- (7) Lift Transducers

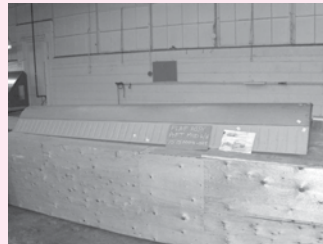
# DEHAVILLAND INVENTORY



*New DeHavilland Inv*



*New DeHavilland Inv*



*DeHavilland Flap*



*New DeHavilland Lines & Spars*



*DeHavilland Control Surfaces*



*New DeHavilland Inv*



*New DeHavilland Skins, Lines & Push/Pull Tubes*



*New DeHavilland Skins, Spars & Formers*



*New DeHavilland Inv*

**AUCTIONEER'S NOTE:** The Owner of Viking Air has contracted with Starman Bros. Auctions, Inc. to liquidate at Public Auction a LARGE amount of NEW Surplus Inventory as well as a good selection of As Removed Inventory. This auction will offer a very good selection of NEW inventory for the Beavers, Otters and Dash -7's. This will include everything from Hardware to Wheels, Brakes, Control Surfaces, Engine Inventory, Accessories, Etc. All of the NEW inventory will be sold with C of C's.

Everything sells "AS IS, WHERE IS" with no warranties implied or expressed. Neither the auctioneer nor owners shall be liable for any incorrect description, fault, or defect. Everything positively sells to the highest bidder. Payment must be made in full day of sale. No property removed until settled for. Auctioneer is not responsible for accidents or stolen property. All counts are approximate. Announcements made day of sale takes precedence over all printed material.

**STARARMAN BROS. AUCTIONS INC.**

1240 Royal Drive ■ Papillion, NE 68046  
(402) 592-1933  
www.starmanauctions.com

Return Service Requested

PRSR FIRST CLASS  
U.S. POSTAGE  
**PAID**  
MAIL U.S.A.

*First Class*

**PAYMENT TERMS:** Cash, Certified Funds, or Company Check ONLY if accompanied by Bank Letter of Guarantee!! NO EXCEPTIONS! Wire Transfers will be accepted with a 20% non-refundable deposit day of sale in one of the forms listed above. We also accept MasterCard and Visa with an additional 3% Buyers Premium applicable.

**PROXY BIDS:** If you are unable to attend this auction we will bid on your behalf. For more info visit our web site at [www.starmanauctions.com](http://www.starmanauctions.com) and click on Upcoming Auctions and scroll down to the Proxy Bid Section. Complete form and fax to (402) 592-2327 or call Steve at (402) 681-6456.

**LOADING & REMOVAL:** Once an item is sold the winning bidder is responsible for its removal. Any cost responsibility and risk of removal of purchases remain with the buyer. Removal may begin after payment in full and must be completed by the posted deadlines. NO EXCEPTIONS OR EXTENSIONS! There may be various trucking companies on site to arrange for transportation. However, it will be the buyer's responsibility to arrange their own trucking.



*Absolute Auction*

**FRIDAY & SATURDAY ~ JUNE 22<sup>nd</sup> & 23<sup>rd</sup>, 2012**  
**Starting at 9:00 AM BOTH DAYS!**

**New Inventory Surplus to Ongoing Needs of**



Auction being held at 4905 77th Ave S.E. ~ Calgary Alberta, Canada

**This Auction will include 8,300 Line Items of NEW DeHavilland & Misc. Inventory**

**OPEN HOUSE: Open House & Pre-Registration**  
**Thursday, June 21<sup>st</sup> - 9:00 A.M. - 5:00 P.M.**

**STARARMAN BROS. AUCTIONS INC.**

1240 Royal Drive ~ Papillion, NE 68046 ~ 4901 E Falcon Drive ~ Mesa, AZ 85215  
(402) 592-1933 ~ (480) 396-0380