

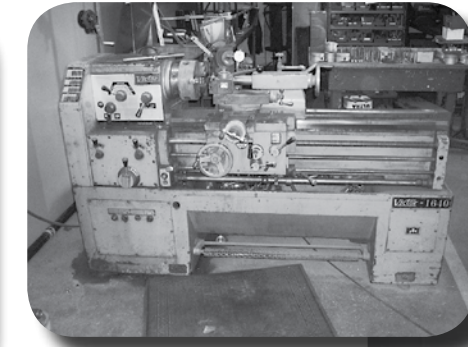
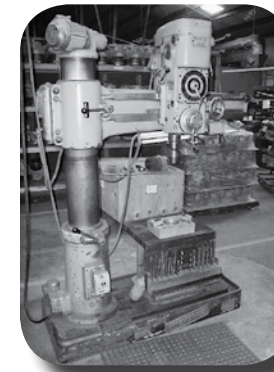
**STARMAN BROS. AUCTIONS INC.**  
 1240 Royal Drive • Papillion, NE 68046-2082  
 (402) 592-1933  
 Return Service Requested

PRSR FIRST CLASS  
 U.S. POSTAGE  
**PAID**  
 MAIL U.S.A.  
 First Class

★ ★ ★ ★ ANNUAL FALL CONSIGNMENT ★ ★ ★ ★  
**AVIATION AUCTION**

**Friday, Saturday & Sunday  
 November 13, 14 & 15, 2009  
 Starting at 9:00 A.M. - All Three Days**

**COMPLETE LIQUIDATION OF CYLINDER  
 OVERHAUL FACILITY  
 1701 North Cimarron Road ~ C.E. PAGE AIRPORT  
 Yukon, Oklahoma**



**ABSOLUTE  
 AUCTION**



**SALE SITE PHONE: (405) 354-7853**

**OPEN HOUSE & PRE-REGISTRATION  
 Thursday ~ November 12, 2009 ~ 8:00 A.M. to 5:00 P.M.**

**AUCTIONEER'S NOTE:** This Fall Consignment Auction should be a very good one for Engine Buyers. We have moved a complete Cylinder Overhaul Facility to our Yukon location for complete liquidation and it will include a full selection of Shop Equipment, Tools, Cylinders, & Inventory.

Everything sells "AS IS, WHERE IS" with no warranties implied or expressed. Neither the auctioneer nor owners shall be liable for any incorrect description, fault, or defect. Everything positively sells to the highest bidder. Payment must be made in full day of sale. No property removed until settled for. Auctioneer is not responsible for accidents or stolen property. All counts are approximate. Announcements made day of sale takes precedence over all printed material.

**PAYMENT TERMS:** Cash, Certified Funds, or Company Check ONLY if accompanied by Bank Letter of Guarantee!! **NO EXCEPTIONS!** Wire transfers will be accepted with a 20% non-refundable deposit day of sale in one of the forms listed above. We also accept MasterCard and Visa with an additional 3% Buyers Premium applicable.

**PROXY BIDS:** If you are unable to attend this auction we will bid on your behalf. For more info visit our web site at [www.starmanauctions.com](http://www.starmanauctions.com) and click on Upcoming Auctions and scroll down to the Proxy Bid Section. Complete form and fax to (402) 592-2327 or call Steve at (402) 681-6456.

**LOADING & REMOVAL:** Once an item is sold the winning bidder is responsible for its removal. Any cost responsibility and risk of removal of purchases remain with the buyer. Removal may begin after payment in full and must be completed by the posted deadlines. **NO EXCEPTIONS OR EXTENSIONS!** There may be various trucking companies on site to arrange for transportation. However, it will be the buyer's responsibility to arrange their own trucking.

**AIRLINE CONNECTIONS**

Most major airlines serve the Will Rogers Airport in Oklahoma City. Rental cars are available there. Private aircraft can land at C.E. Page Airport, the identifier is RCE.

**Hotel  
 Headquarters:**

Clarion Inn  
 737 S. Meridian  
 Oklahoma, City, OK  
 405-942-8511

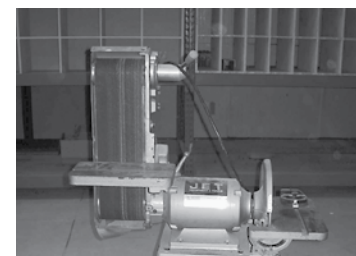
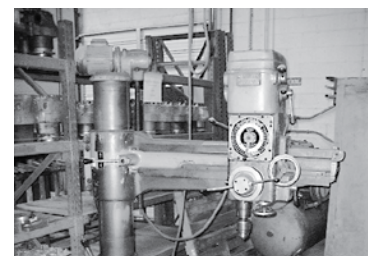
**Local Hotels:**

Best Western Saddleback Inn  
 405-947-7000  
 Holdiday Inn 405-685-4000  
 Regency Inn 405-947-8721  
 Oak Tree Inn & Suites 405-943-7800  
 LaQuinta Inn 405-942-0040  
 Biltmore Hotel 405-947-7681

★ ★ ★ ★ ANNUAL FALL CONSIGNMENT ★ ★ ★ ★  
**AVIATION AUCTION**

**Friday, Saturday & Sunday  
 November 13, 14 & 15, 2009  
 Starting at 9:00 A.M. - All Three Days**

**COMPLETE LIQUIDATION OF CYLINDER  
 OVERHAUL FACILITY  
 1701 North Cimarron Road ~ C.E. PAGE AIRPORT  
 Yukon, Oklahoma**



**STARMAN BROS. AUCTIONS INC.**  
 1240 Royal Drive • Papillion, NE 68046-2082  
 (402) 592-1933 Fax: (402) 592-2327  
 website: [www.starmanauctions.com](http://www.starmanauctions.com)

**STARMAN BROS. AIRLINE SERVICES, INC.**

**STARMAN BROS. AUCTIONS INC.**  
 1240 Royal Drive • Papillion, NE 68046-2082  
 (402) 592-1933 Fax: (402) 592-2327  
 website: [www.starmanauctions.com](http://www.starmanauctions.com)

**STARMAN BROS. AIRLINE SERVICES, INC.**

## SHOP EQUIPMENT



Dreis & Krump 8' Sheet Metal Brake, 16 Ga. Capacity



Pexto 36" Sheet Metal Shear, Mdl 137, 18 Ga. Capacity



Pexto 6' Power Shear (Belt Driven), 16 Ga. Capacity



Pexto 36" Sheet Metal Roller, Mdl 381-D



24" Sheet Metal Finger Brake on Cart w/Eastwood Sheet Metal Bearer & Multiple Dies



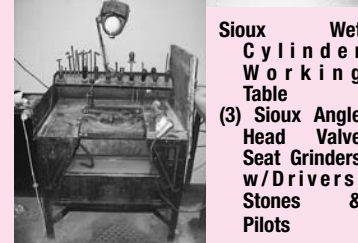
(2) Comp Air Mdl D-216 Cylinder Barrel Honing Machines  
(4) Cylinder Heating Stands  
Cleaning Tanks

Miller Syncrowave 350 LX CC-AC/DC Square Wave Welding Power Source, Mig/Tig/Stick, Argon Attach w/Miller Coolmate 4 Water Cooling System

Jet Mdl JSG-6 12" Disc & 6" Belt Sander  
Craftsman 12" Band Saw  
Blue M Model VO-18L Oven, Temps Up To 500° F w/ Precision Vacuum Pump 2.65 CFM



Baron-Blakeslee Heated Vapor Degreaser Mdl MVR-215



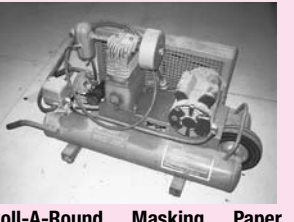
Travel 7", Arm Travel 30" Ingersoll Rand Mdl 71T2 Air Compressor, Horizontal 200 Gal Tank, 15 HP, 3 Phase, 2 Cylinder  
Ingersoll Rand Mdl 253 Horizontal Air Compressor, 5 HP, 3 Phase, 200 Gal Tank, 2 Cylinder  
10 HP Air Compressor, 200 Gal Horizontal Tank, 2 Cylinder  
Clipper Concrete Saw Mdl C-115 w/11 HP Honda Gas Engine  
Double Door Cylinder Heat Treat Oven, 41" D x 7' W, x 34" T  
5,500 LB Pallet Jack



Victor 1640 High Speed Lathe, 15-3/4" Swing Over Bed, 40" Between Centers, 65-1800 RPM Spindle Speed



Bridgeport Vertical Milling Machine, 1 HP, 9" x 42" Table, Spindle Speed 80-2720 RPM w/7" Riser Block  
Bridgeport Vertical Milling Machine, 9" x 42" Power Feed Table, 1 HP, 80-2720 RPM Spindle Speed  
Bridgeport Vertical Milling Machine, 1 HP, 9" x 42" Power Feed Table, 80-2720 Spindle Speed, (2ea) 7" Riser Blocks



Roll-A-Round Masking Paper Dispenser  
Several Pedestal Shop Fans  
Box Fans  
R&D Barrel Top Parts Washer  
#2 Arbor Press  
Rol-Air Mdl 5715 Portable Air Compressor, Electric Motor  
Homelite Mdl 8D28-12 Engine Starter Energizer, up to 105 AMPs  
Cress Mdl B-23-H Electric Furnace, up to 2200° F  
(2) Oxygen Acetylene Torch Sets, (1) Large, (1) Small

Miller Deltaweld 302 CV-DC Welding Power Source  
Miller XR Control Extended Reach Aluminum Wire Feed System w/ Miller XR-15A Air Cooled Wire Feed Gun



Zero Mdl D-100-F Bead Blast Cabinet, 42" W x 26" D x 23" T w/Filter & Reclaimer



Cylinder Seat Cutting Machine



Trinco Bead Blast Cabinet, 48" x 36" w/ Filter & Reclaimer  
(5) Cylinder Working Tables w/Rotating Holding Fixture for Welding & Grinding



Aladdin Mdl 280 Portable Kerosene Space Heater 280,000 BTU w/Blower

Several Roll-A-Round Cylinder Holding Carts, 12 Cyls per Cart  
Shop Vacs  
Bench Vices & Grinders  
(2) Meyers 36" Aircraft Jacks, 3 Ton Capacity w/Extensions  
(2) Meyers 24" Aircraft Jacks, 3 Ton Capacity w/Extensions  
Meyers Tail Stand & Bead Breaker  
Champion Spark Plug Cleaner/Tester  
Shop Built Hyd Mule, 2,000 PSI

## HAND TOOLS



Several Continental & Lycoming Seat Cutters  
Continental & Lycoming Seat Removers & Installers, Air & Water Cooled  
Continental & Lycoming Valve Guide Reamers, Boss Reamers, Rocker Arm Reamers



Rimac Valve Spring Tester, Cylinder Ball Hones, Good Selection of Cylinder Bushing & Seat Drivers, Cont. & Lyc. Cylinder Barrel Bore Master Gauges, Piston Ring Compressors, Go & No-Go Gauges, Several Cylinder Holding Fixtures, Cylinder Bore Gauges, 6-Piece Micrometer Set, Several Other Micrometers, Letter & Number Stamps, Stone Dressers, Large Selection of Pneumatic Die Grinders, Grinding Head & De-Burrers, New & Used Torque Wrenches, Veiner Calipers, Chicago Pneumatic & Ingersoll Rand Air Drills, Pneumatic Rivet Guns, Impact Wrenches, 12" Height Gauge, 9" x 12" Granite Plate, Ohaus Triple Beam Scale, Helicoils, New & Used Socket Sets, Tap & Die Sets, Drill Bits, Large Selection of Reamers, Manual Rivet Squeezers, Clecos, C-Clamps, Wire Crimpers, Etc.



## LANDING GEAR, WHEELS & BRAKES

Misc. Cessna, Piper & Beech Landing Gear to include Several Cessna & Piper Landing Gear Barrels, Cessna & Piper Scissors, Cessna Steering Rods, Actuators, Etc. Good Selection of 5", 6", & 10" Wheels & Wheel Halves, Brake Disks, Calipers, Axles, C-188 Spring Gears, Etc.

## MUFFLER & EXHAUST

As Removed Mufflers & Exhaust Pipes for Cessna, Piper, & Beech; Misc. Radial Engine & Turbine Exhaust

## SPINNERS & BACKING PLATES

Good Selection of Spinners & Backing Plates includes some new.

## CONTROL SURFACES

Good Selection of Control Surfaces to Include Cessna Horizontal Stabilizers, C-172 & C-182 Vertical Fins, Cessna Flaps, Misc. Cessna Elevators, Several Piper Flaps & Ailerons. Several more expected by sale day.

## COWLING & FUEL TANKS

Good Selection of Cessna & Piper Cowling Tops & Bottoms, Beech Cowling, Misc. Cessna & Piper Fuel Tanks

## AIRFRAME INVENTORY

Includes Cessna, Piper, Beech New & As Removed Inlets, Wheel Pants, Wing Tips, Doors (Mains & Gear Doors), Windows, Cessna Lift Struts, Control Yokes, Oxygen Bottles, Air Boxes, Trim Tabs, Control Surface Tips, Strut Cuffs, Skins, Doublers, Channels, Bushings, Bearings, Control Cables, Pulleys, Tach Cables, Brackets, Mounts, Steps, and a Good Selection of Small Parts for Various Aircraft.

## SEATS & INTERIOR INV.

Misc. Seats include Pilot, Co-Pilot, Rear Seats, Etc., Seatbelts, Ash Trays, Arm Rests, Various Interior Plastics

## HARDWARE INVENTORY

Good Selection of Hardware include AN, MS, NAS, Bolts, Screws, Nuts, Washers, Cotter Pins, Dzus Fasteners, Adel Clamps, Solid Rivets, Cherry Rivets, AN Hydraulic Fittings, O-Rings, Gaskets, Clamps, Etc.

## ELECTRICAL INVENTORY

Good Selection of Power Supplies, Strobes, Beacons, Circuit Breakers, Flash Tubes, Solenoids, Whelen Power Supplies, Static Inverters, Relays, Voltage Regulators, Sealed Bulbs, Miniature Bulbs, DC Motors, Battery Cables, Cable Ends, Connectors, Pins, Etc.

## PROPELLERS & INVENTORY

(3) New Fixed Pitch Props  
(2) Constant Speed Hartzell Props  
Various Damaged Constant Speed & Fixed Pitch Props  
Misc. Propeller Parts

## CRANKSHAFTS & CAMSHAFTS

Good Selection of Continental & Lycoming Crankshafts & Camshafts, both 4 & 6 Cylinder

## ACCESSORIES

Carburetors: MA-4-5 and Pressure  
Starters: Prestolite, Delco 12 & 24 Volt, Light Weight  
Alternators: Good Selection  
Magnets: Slick & Bendix, 4 & 6 Cylinders  
Generators: Misc. Selection  
Oil Coolers: Continental & Lycoming Front & Rear Mount  
Fuel Pumps: Good Selection of Various Styles & Manufacturers  
Prop Governors: Hartzell, McCauley, Hamilton Standard  
Hydraulic Pumps: Misc. Selection  
Tach Generators: Good Selection  
Dry & Wet Vacuum Pumps: Various Selections  
Right Angle Starter Drives: Good Selection and Misc. Inventory  
Continental & Lycoming Hydraulic Pumps: Good Selection  
Continental Fuel Pumps: Misc. Selection  
Injectors & Lines: Various Selections  
Throttle Bodies: Misc. Selection  
Turbo Chargers, Waste Gates & Controllers: Various Selections  
Turbine Engine Accessories: Various Types of Turbine Engine Accys.

## LYCOMING & CONTINENTAL INVENTORY

Good Selection will include New and As Removed Starter Ring Gears, Oil Pump Housings, Starter Adapter Housing, Several Boxes of Lycoming Gears, Several Boxes of Continental Gears, Connecting Rods, Counter Weights, Tappets, Lifters, Accessory Drives, Accessory Mounts, Intake Pipes, Crossover Tubes, Engine Legs & Mounts, Through Bolts, Etc.  
Good Selection of Cylinder Working Inventory to include New, As Removed, & Serviceable Valve Guides, Seats, Bushings, Valve Springs, Piston Rings, Gaskets, Fin Stabilizers, New Pistons, Crush Gaskets, Push Rods, Push Rod Housings, Rocker Arms, Rocker Arm Shafts, Keepers, Rocker Box Covers, Etc.

## CYLINDERS

(9) Lycoming O-235 O/H Cyl. Stud Assys.  
(3) Lycoming O-320-H2AD O/H Cyl. Stud Assys.  
(7) Lycoming IO & O-320 O/H Cyl. Stud Assys.  
(3) Lycoming O-340 O/H Cyl. Stud Assys.  
(3) Lycoming O-360/540 O/H Cyl. Stud Assys.  
(5) Lycoming IO-360/540 O/H Cyl Stud Assys.  
(5) Lycoming O-320 O/H Cyl. Stud Assys. (Steel)  
(3) Lycoming IO-360 O/H Cyl. Stud Assys. (Steel)  
(5) Continental E Series O-470 O/H Cyl. Stud Assys.  
(3) Lycoming IV0 & VO-435 O/H Cyl. Stud Assys.  
(8) Lycoming IGSO & GO-480 O/H Cyl. Stud Assys.  
(3) Lycoming TSIO-540 & IO-540 Updraft O/H Cyl. Stud Assys.  
(8) Lycoming IGSO & TIO-540 Updraft O/H Cyl. Stud Assys.  
(4) Continental O-520 O/H Cyl. Stud Assys.  
(3) Continental O-470 O/H Cyl. Stud Assys.

## ANTIQUE & COLLECTABLE SMALL AIR COOLED ENGINES

(10) Antique & Collectable Small Air Cooled Engines to include Cushman Husky, Maytag, Wisconsin & Briggs & Stratton

**STARMAN BROS. AUCTIONS INC.**  
1240 Royal Drive • Papillion, NE 68046-2082  
(402) 592-1933 Fax: (402) 592-2327  
website: www.starmanauctions.com

**STARMAN BROS. AIRLINE SERVICES, INC.**

## Welded, Machined & Plated Cylinders



(7) Continental 520 Cyl.  
(6) Continental GTSIO-520 Cyl.  
(8) Continental O-470 E Series Cyl.  
(3) Continental TSIO-360 Cyl.  
(5) Continental 65/85/200 Cyl.  
(13) Lycoming O-320 H2AD Cyl.  
(10) Lycoming 360/540 Cyl., Narrow & Wide Deck  
(11) Lycoming IGSO-540 & TIO-540 Cyl.  
(9) Lycoming TIO-540 Cyl.  
(15) Lycoming O-320 Cyl.  
(5) Lycoming O-235 Cyl.

## Welded & Inspected Cylinders



(51) Lycoming 360/540 Cyl.  
(29) Lycoming TIO-540 Cyl.  
(8) Lycoming O-540/TIO-540 Updraft Cyl.  
(44) Lycoming O & IO-320 Cyl.  
(18) Lycoming O-290/235 Cyl.  
(11) Lycoming GO-480 & VO-435 Cyl.  
(11) Lycoming O-320-H2AD Cyl.  
(20) Continental 65/85/200 Cyl.  
(7) Continental E-Series Cyl.  
(22) Continental IO-360 Cyl.  
(26) Continental O & IO-470 Cyl.  
(60) Continental O & IO-520 Cyl.  
(9) Continental GTSIO-520 Cyl.

## Cylinder Cores

(180) Lycoming 320/360/540 Cylinder Cores  
(310) Continental 470/520 Cylinder Cores  
(40) Continental GTSIO-520 Cylinder Cores  
(25) Continental 65/85/200 Cylinder Cores  
(20) Lycoming 540 Updraft Cylinder Cores  
(21) P&W R-985 Cylinder Cores  
(75) Lycoming 720 Cylinder Cores

## INSTRUMENTS & AVIONICS

The Usual Good Selection of Instruments & Avionics includes Gyros, Vertical Speed Ind., Fuel Gauges, RPM's, Turn & Banks, Turbine Gauges, Manifold Press, Altimeters, Etc., Nav Coms, Transponders, Switching Panels, Receivers, Transceivers, Power Supplies, Etc.

