

5 Days **AVIATION AUCTION** **2 Locations**

Equipment Surplus to Ongoing Needs of



**Tuesday & Wednesday
September 20 & 21, 2005**
 U.S. Airways Maintenance S.S.B. Building & Hangar #2 Located on Hangar Rd.
PITTSBURGH INTERNATIONAL AIRPORT - PITTSBURGH, PA
 Directions: You Must Enter the Airport From the Southeast Side: Take Business 60 to Hangar Rd. Turn Into Airport & Follow Hangar Rd. to U.S. Air Maintenance Area.
Starting at 9:00 A.M. Both Days
 Pittsburgh Sale Site Phone: 412-472-7404

OPEN HOUSE
Monday, September 19th From 9:00 A.M. to 5:00 P.M. For Pittsburgh Location.
Monday, September 26th From 9:00 A.M. to 5:00 P.M. For the Charlotte, N.C. Location.

Airline Connections: All Major Airlines Into Pittsburgh International Airport & Charlotte Douglas International Airport. Rental Cars Available at Both Locations.

Pittsburgh Hotels:
 Hotel Headquarters:
 Four Points Sheraton
 One Industry Lane, Pittsburgh
 724-695-0002

Embassy Suites Hotel 550 Cherrington Pkwy., Pittsburgh 412-269-9070	Comfort Suites 750 Aten Rd., Pittsburgh 412-494-5750	Holiday Inn 8256 University Blvd., Moon Township 412-262-3600
Hampton Inn - Pittsburgh Airport 8514 University Blvd. 412-264-0020	Courtyard By Marriot 450 Cherrington Pkwy., Pittsburgh 412-264-5000	Wyndham Hotels & Resorts 777 Aten Rd., Pitts- burgh 412-788-8800

Several Other Hotels in the Pittsburgh Intl. Airport Area. Go Online to Look Up

**Tuesday, Wednesday & Thursday
September 27, 28 & 29, 2005**
CHARLOTTE - NORTH CAROLINA

**Tuesday & Wednesday
September 27 & 28, 2005**

U.S. Airways Maintenance Hangar
 5000 Hangar Rd., Charlotte Intl. Airport
 Directions: From I-85 Take Billy Graham Pkwy . Airport Exit, Follow Billy Graham to West Blvd. (Hwy. 160) Turn Right Go Yorkmont Rd. Turn Right, Go to Hangar Rd. Turn Left Follow Hangar Rd. to Bottom of Hill to Park-
 ing Lot.

Starting at 9:00 A.M. Both Days.
 Charlotte Sale Site Phone: 704-359-2428

Thursday - September 29, 2005

5535 Wilkinson Blvd. - Charlotte, N.C.
 Directions: From I-85 Take Billy Graham Pkwy./Airport Exit, Turn Toward airport Go to Old Dowd Rd. Turn Right Go 1/2 Mile to Harlee Rd. Turn Right Go to Corner of Harlee Rd. & Wilkinson Blvd. & Turn Right into Parking Lot.

Starting at 9:00 A.M.
 Charlotte Sale Site Phone: 704-359-1514

Charlotte Hotels:
 Hotel Headquarters:
 Sheraton Airport Plaza
 3315 Scott Futrell Dr.
 704-392-1200

Wyndham Garden Hotel 2600 Yorkmont Rd. 704-357-9100	Homestead Suites 710 Yorkmont Rd. 704-676-0083	Holiday Inn Charlotte Airport 2707 Little Rock Rd. 704-394-4301
---	--	--

Holiday Inn @ Billy Graham Pkwy.
 321 W. Woodlawn Rd.
 704-523-1400

STARMAN BROS. AIRLINE SERVICES, INC.
 9000 NW 15TH STREET ■ MIAMI, FL 33172
 (305) 477-6865

STARMAN BROS. AUCTIONS INC.
 1240 Royal Drive ■ Papillion, NE 68046-2082
 (402) 592-1933

Sells Tuesday, September 20 Pittsburgh - S.S.B. Building

AVIONICS & INSTRUMENT SHOP



Kollsman Precision Press Controller Monitor P/N TVCS-9002, Modified w/several Testronicx Automated Test Program Attachments for Flt. Line Test Box

Barfield Druck Air Data Test System Mdl DPS 501; Range PS 40.0 IN-HG; QC 50.2 IN-HG; PT 79.7 IN—HG

Sperry Mdl ADT-222B Air Data Test System

Kollsman P/N 89944-18906010002 Precision Press/Altitude Controller; Range 0.5-90.0 in HG



737 Fuel Quantity Indicator Test Bench w/ Zea Siada P/N 4362-25 Test Panel & 4362-17 Test Panel & Vacuum Gauge
(2ea) Collins Mdl 980L-1 Directional Gyro Test Bench's w/ Various Adapters

Ideal-Aerosmith Mdl 17-53-3A/D Tachometer Test Stand; Range 180-5000 RPM

Ideal-Aerosmith Mdl 17-53-3A Tachometer Test Stand; Range 180-5000 RPM



Avtron Mdl T-282 Gen. Controller PC Board Test Bench w/ Cards for 727, DC-9 & Misc 737



Gilman-Gishold Rotor Balancer Mdl BP-2020; for balancing Gyro Rotors

Electro Mechano Hi Speed Drilling Machine
Varimatic Precision Drilling Machine

(2ea) Mach Airspeed Ind. Test Bench's to include: Master Control Panel, North Atlantic 8500 Angle Position Ind., Fluke 8505 A Digital Multimeter & North Atlantic Mdl 213 Phase Angle Volt Meter



Sperry Auto Pilot Instrument Test Bench (ADI/CDI) w/Sperry P/N T-324542 Digital Test Panel, P/N T-324817 Digital Cal Fixture, RD/800K Digital T/F Adapter Module



Garrett Mdl CT-8094 Pack/Zone Test Set



Greer Hydraulic Test Stand Mdl HA-6DVRM-1F-3-5-10-11, 3000-5000 PSI, 4Port System, 90 HP Drive Motor



(3ea) Ideal Aerosmith Mdl 1412BE Rate Tables; 0-15°
(2ea) Barfield Mdl 2116 Tilt/Turn Tables
(2ea) Sperry Tilt Table 90°
(2ea) Horizon Gyro Test Panels



Lepel Heat Induction Generator Mdl T-2.5-1 KCl w/Lepel Mdl RWAG-5 Distiller
Tenny Mdl TJR DBI Oven; Temp Range -112° To 350° w/Digital Read Out

(2ea) Nitrogen Bottle Press Test Bench's
(2ea) Shop Built Cable Tension Pull Testers
EG&G Chandler Eng. Mdl 23-1 Dead Weight Tester
EG&G Chandler Eng. Mdl 55-1 Dead Weight Tester
U.S Air Shop Built Universal Instrument Test Set
Pressure gauge Test Bench w/ 2 ea Max. Case Press 35 PSIG Gauges
4'W x 8' H Paint Booth w/Fan

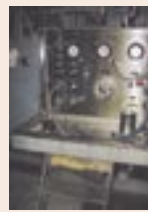
Automated Test Equipment Test Stand for Directional Gyros
Radio Freq. Lab Mdl 889B Magnet Treater
(63ea) Sturdalite 6'x3' Instrument & Avionics Test Benches; Double Pedestal Drawers w/Full Power
(38ea) Sturdalite 6'x3' Instruments & Avionics Test Benches; Single Pedestal Drawers w/Full Power, some Formica & Maple Tops
Large Selections of Bench Mounted Magnifying Lamps

Good Selection of Diodes, Resistors, Transistors, Clips, Electrical Connectors etc.
Various Small Hand Tools
Boeing 737-300/400 Auto Pilot Break-Out Box
Honeywell Auto Pilot Instrument & Servo Test Bench w/ Honeywell C-6 Adaptor Panel, R4-MHR4 Adapter Panel, P/N T-307962 Servo Tester, P/N T-307951 Universal Test Panel, RD-300 Adapter Panel

HYDRAULIC SHOP



ACL Technologies Mdl 9770-0480 Universal Component Hyd. Test Stand S/N 2322-001, Flow & Pressure 50GPM @ 5000 PSIG, Temp 90-160° F, 125 HP D.C. Drive Motor, 1750-2500 RPM, Gear Box Speed 0-4000 RPM (low) 0-10,000 RPM (high) w/Sound Proof Enclosure



Bauer Mdl 9076001 CSD/Oil Cooler Flushing Stand, Reservoir 100 gal., Max. Pressure 80 PSIG, Max flow 80 GPM w/10 HP Motor, Mfg. 1989, S/N9498



AAI/ACL Technologies Servo Valve Test Stand Mdl 9770-0117-1, S/N 03693-001 Skydrol Fluid, Flow & Press. 20 GPM @ 5000 PSI, Temp 120° F for 4-Way Flow Control & 3-Way Pressure Control Servo Valves



James A Staley Mdl D37885A Aircsearch APU Fuel Control Unit Test Stand w/10 HP Drive, Pressure Gauge Range from 0-1000 PSIG w/Up to 2600 PPH Fuel Flow



(2ea) Greer Hydraulics Mdl HA-6 DVRM Test Stands, Reservoir 40 gal.Skydrol, Main Pump, 22 GPM @ 3000 PSI & 13 GPM @ 5000 PSI, Boost Pump Rating 20 GPM & 1800 RPM, Main Motor 40 HP 2 Port Sys. (1 stand has new pump & drive w/various new plumbing was being rebuilt)

Shop Built Overhaul Tools for Boeing 737-300/400 Includes Ground Spoiler, Actuator Lock, Trailing Edge Flap Actuator Control Valve, Leading Edge Flap Actuator Control Valve, Main & Nose Gear Hyd. Module, NLG Actuator Lock, NLG Retract & Steering Actuator Lock, MLG Actuator, Ground Speed Brake Actuators, Rudder Control Valve, Fuel Boost Pump, APU Control Valve & various others, Galley Door Snubber, 727 Landing Gear Actuator Tools.



Shop Built Boeing 737-300/400 Wing Fuel Boost Pump Test Stand w/Digital Read Out
Kahn Mdl 2576 Pneumatic Accessories Test Stand, up to 5000PSI (needs work)
Grieve Mdl AA-650 Electric Oven, Input 12kw, max temp 575° F
Lapmaster 15 Lapping/Polishing Plate
Aeroquip P/N F-2152 Hose Assembly Machine

Sells Tuesday, September 20 Pittsburgh - S.S.B. Building

ELECTRICAL SHOP



Avtron Mdl K738 CSD/Generator Test Stand, 300 HP Motor 1000 & 2170 RPM w/Max Spd of 2400 RPM, Gear Box 15,000 - 30,000 RPM Control Console P/N D20423 w/K731 Transient Recorder, Oscilloscope, K225 Modulation Meter, Computer Control w/619654 & A17638 Test Adapter, Load Bank etc. S/N 54



Avtron Mdl T-873 CSD /Generator Test Stand 110 HP Motor, Gear Box up to 11,000 RPM Control Console P/N D10121 w/K-225 Modulation Test Set, Load Bank etc.



Tenney Mdl T.T.C Environmental Chamber, S/N 10949-11, Operating Range - 80° C To + 200° C, Inside 24" W x 27 3/4" H x 26" D

Lear Siegler Rotary Actuator Test Stand, Mdl 19-110072, S/N XL-3 w/Digital Read Out



Airesearch P/N 2798114-3, S/N 102-104 Actuator Load Test Set
Grieve Mdl MT 550 Electric Oven w/Honeywell Digital Read Out, 115 V, 1 Phase
E.J. Callahan Mdl 3024 Electric Oven w/Recirculating, Blower, 500° F, 480 V, 3 Phase
Kingsley Electronic Mdl E-312 Wire Labeler
APU Starter Vacuum Test Cart
Sorenson Mdl DCR55-180T Power Supply used for APU Starter Run In
Lamda Mdl LB-723-FMOV DC Regulated Power Supply
Delta Rockwell 11" Metal Lathe, 11" Swing, 36" Between Centers



Schenck Mdl HL2B Balancing Machine w/Schenck Mdl CAB 720H Controller, 60-15,000 RPM 3.5" Max Diameter over Bed, 24.5" Max Distance between Support Bearings, S/N AHD 8702, Mfg. 2001
Radio Frequency Lab. Mdl 1500 Magnet Charger
Radio Frequency Lab Mdl 1500 A Magnet Charger
Dake Arbor Press
Stainless Steel Liquid Soap Cleaning Tank w/Agitator & Hyd Lift
Paasche Spray Cleaning Booth 4'W x 71/2' H x 4'D
Several 6' Metal Shop Benches & Bench Vices
Fire Proof & 2 Door Metal Cabinets
Metal Shelving Units

MACHINE SHOP



Mazak SV-20 CNC Vertical Milling Machine Center w/Mazatrol Cam M-2 Control Panel, 3 Axis, 23.6" x 48.8" Table, 20 HP Motor, 40 Tool Magazine, 40" X Axis Travel, 25" Y Axis Travel, 21.5" Z Axis Travel, Spindle Speed, 20-3600 RPM, 25.6" Throat Depth



Summit Mdl 59-H Vertical Boring Mill, S/N 15-A553, 59" Vertical Boring Mill Working Table 59" Dia, Max Machining Dia w/Vertical Head 70", Vertical Travel of Cross Rail on Columns 39", Max Height under Cross Rail 47 1/4



Ballard Dynatrol 56" Vertical Turret Lathe: 56" Table Dia. 56" Max Work Swing, 58" Work Height under Rail 40"



Harrison Mdl M-750 Centre Gap Bed Lathe, Sony Magnescale LH-10 Digital XY Readout, 6 1/2 Spindle Hole, Swing Over Bed 30", In Cap 41", 6' Bed, 3 & 4 Jaw Chuck, Face Plate, Steady Rest



Harrison Mdl M-500 Center Gap Bed Lathe; 530mm Swing, Sony Magnetic LH-10, XY Digital Read Out, 3 1/4 Spindle Hole, 21" Swing Over Bed, 28 3/4" In Gap, 18 Speed 31 to 1600 RPM, 80" Bed, 4 Jaw Chuck Face Plate



Summit 26"/30" x 160" Gap Bed Engine Lathe, 26" Swing Over Bed, 30" In Gap 160" Bed, Digital XY Read Out, 4 1/4 Spindle Hole



LeBlond 15" Regal Lathe, Digital XY Read Out, 2 1/4 Spindle Hole, 15 1/2 Swing, 5'6" Bed Length, Spindle Speed 30-1800 RPM, Tapper Attachment



Bridgeport Series II Vertical Milling Machine w/XY Digital Read Out, 9" x 34" 3 Slot Table, 2 HP Motor, 150-4200 RPM



Bridgeport Series I Vertical Milling Machine, 1 HP, 80-2720 RPM Spindle Speed w/True Trace Syncro-Tracer Attachment, Mdl 1053-01,

(2ea) Lansing TAD- FS-750 Facing Lathes, Swing Over Bed 60", Over Cross Slide 15", Distance Face Plate to Tool Post 16"-40", Spindle Speed 6-200RPM
Dumore C6C 34FB3D Tool Post Grinder
Dumore 60213GA801 Tool Post Grinder
Dumore Cat #55-011 Tool Post Grinder
Jet Mdl JDP-20VS-1 Variable Speed Floor Model Drill Press, 300-1800RPM
Walker Turner Variable Speed Floor Model Drill Press, 260-5000 RPM Spindle Speed



Lapmaster 24 Laping Table S/N 2400004
Greenerd #3A Arbor Press

ENGINE ARMS WATERJET SYSTEM



United Technologies Pratt & Whitney Engine ARMS Waterjet System. CNC Computer Controlled, Has Fanuc S-420 Robot, Kavel Robot Controller, 60" Diameter Rotary Table w/120" Part Capability. 55-150 Jet Edge Ultra High Pressure Pump, Quick Change Tooling Fixture Stand, Water Maze Water Cleaning System w/ AccuChiller, (2ea) Aerology Media Filter Modules Enclosure is 18' Wide x 35' Long



ENGINE TOOLING

Good Selection of Shop Built Tooling and Fixtures for P&W JT-8D Engines

Sells Tuesday, September 20 Pittsburgh - S.S.B. Building

OVENS



Gruenberg Mdl
B65C360M
Electric
Oven, S/N
25543 w/
Circulating
Fan, 650° F,
Inside 36" D
x 47" W w/
Honeywell Chart Recorder

K.H. Huppert Electric Furnace Mdl
KR-HT-604860-PCOT 2400° F,
Recently Rebricked 8' x 8' x 8'
Outside Measure, Chamber Di-
mensions: 60" W x 48" H x 60"
D, Honeywell Chart Recorder
Digital Readout
Grieve Mdl AB-650 Electric Fur-
nace, 650° F, 3' W x 3' D x 3' H
Inside Measurement
(2ea) Grieve Mdl AB-500 Electric
Oven 500° F Max Temp, 3' x 3'
x 3' Inside Measurement
K.H. Hauppert Mdl 5700 SRHT
Electric Oven, 19" W x 19" D x
12" Inside



Grieve Mdl
A B - 0 8 5 0
Electric
Oven, 650°
F Max Temp,
36" x 36" x

40" Inside Measure w/Digital
Readout

BLAST CABINETS & VIBRO MILLS



Empire Mdl OF-3648-P Blast Cabinet w/Empire Mdl DCB-200 Filter Sys-
tem & Reclaimer, Dbl Nozzle, Programmable



Automated Finishing Inc. Mdl
2V30 Vibratory Cleaner,
S/N 2158 w/Mdl. 2460 Com-
pound Feed System
Empire Steel Shot 8 Nozzle Blast-
ing Cabinet w/Hopper Feed
System w/Reclaimer & Dust
Collector



Sweco Vibro Finishing Mill Mdl.
FM-10-V/SC, S/N 10FM-
118230, 5 HP, 45" Round
(2 ea) Empire Mdl # PF-364B Blast
Cabinets w/Filters & Reclaim-
ers
Vapor Blast Mdl. #4848 Liquid
Honing Machine
Zero Mdl. BNP-220 Blast Cabinet
w/Reclaimer Filter
Empire Mdl #PF-6060 Blast Cab-
inet (Glass Bead)

PAINT BOOTHS



Binks Paint Booth, 12'W x 28' L w/
Explosion Proof Lighting, Fire
Sprinklers & Filter System
Protectaire Paint Booth, 8' x 8'
Inside, 12' x 8' Overall w/Filler
System,
3 1/2' x 8' Dbl. Swing Out Doors

SHEET METAL EQUIPMENT

Tennsmith Mdl T-52 Sheet Metal Shear, 52", 16 Gauge Cap
DoAll Mdl 2013-20 Bandsaw, 20" Throat, Variable Speed Blade & Weld-
er

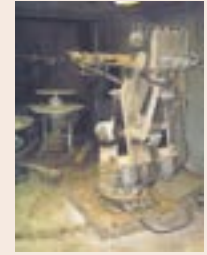
WELDING EQUIPMENT



Sciaky AcuWeld 500 CNC Fusion
Weld System, Headstroke 30",
Seam Tracking Travel 30",
Power Supply Max Current 200
Amps, Travel: X Axis Torch L/R,
Range/Speed 34.5 in @ 0-100
In/Min, Y Axis Table In/Out 18.5
in @ 0-100 In/Min, Z Axis torch
Up/Down 34.0 in @ 0-100 In/
Min, Has Henning rotary Posi-
tioner CW/CCW, Speed Range
0-5 Rev/Min Tilt Position Up/
Down -5° To 95° Positioner,
Load Cap 1000 Lbs.



Metco Type AR1000 Thermal Spray Robot w/AR1000 Control Panel,
AR60 Interface Module & Metco type MC-II Plasma Flame Control
Unit w/Metco Tilt Table Type HE-AR Control Unit, & Metro Type 4MP
Powder Feed Controller. (Contained in Metco Sound Proof Booth)



Thermation Mdl #109897 Six Zone Heat Treatment Machine w/Yokoga-
wa 6. Micro Processor Base Strip Chart Recorder



(5ea) Miller Syncrowave 350 CC-
AC-DC Welding Power Sources,
220/480 V, Single Phase w/Gas
Attach/Water Cooled
Miller Syncrowave 300 CC-AC/DC
Welding P/Supply, 220/460V,
Single Phase w/Gas Attach/
Water Cooled

MISCELLANEOUS EQUIPMENT

Rockwell Mdl 15-655 Variable
Speed Bench Top Drill Press,
S/N 1819977, 300-4700 RPM
Dayton 6" Belt & Disc Sander w/
Rockwell Dust Collector

Delta 1 HP Pedestal Grinders
Rockwell 6" Belt Sander w/Dust
Collector
Sev. Burr King 2" Belt Grinders
Delta 6" Belt & Disc Sander

OVERHEAD HOIST & TROLLEYS

(2ea) Spanmaster 6 Ton Elect Bridge & Trolleys, 30"W, Each Bridge has
2 Wright 3 Ton Electric Hoist
Spanmaster 6 Ton Overhead Electric Bridge & Trolley w/ 2ea Wright 3
Ton Hoists, 30"W, 120' L
PDS Overhead Electric Trolley System, 18' Wide Trolley w/75' L Rails w/
P&H 3 Ton Electric Hoist
Spanmaster 3 Ton Trolley 40' W & 130' L, w/2 Wright 1 1/2 ton Electric
Hoists



(2ea) Yale 1/2 Ton Electric Hoist w/12' Bridge, 50' Rails
Yale Electric 3 Ton Overhead Hoist w/Accro 18' Trolley & 132' Rails
Pittsburg Crane 2 Ton Electric Overhead Hoist w/18' Trolley & 108' Bridge
Coffing 1/2 Ton Overhead Electric Hoist w/24' Trolley & 21' Rails
LoadMate 1/4 Ton Overhead Hoist w/Rails
Spanmaster Electric Trolley System 15' Wide, w/1 Ton Electric Hoist
Free Standing Bridge & Trolley w/2 ea P&H 1/2 Ton Overhead Electric Hoist w/24' Electric Trolley's & 72'
Bridge
Free Stand Electric Bridge & Trolley System, Dbl System (side 1) is 14' W x 75' L w/3 ea 1 Ton Electric Hoists,
(side 2) 18' W x 75' L w/3 ea 1/2 Ton Electric Hoists

MEZZANINES

48' Long x 30' Wide Free Standing Mezzanine
42' Long x 21' Wide Free Standing Mezzanine
80' x 100' Mezzanine (Disassembled)

**NOTE: There Will Be Office Furniture
Located in All The Shops That Will Be
Sold Throughout The Two Days.**

Sells Tuesday, September 20 Pittsburgh - S.S.B. Building

CHROMATE & CLEANING LINES



Chromate Line 7 Tanks w/Magnus Miji-Lif & Magnus AJA-LIF Tanks (Tank 1) Mild Alkaline, (Tank 2) Rinse Water 140°, (Tank 3) Chronic Acid Pickle, (Tank 4) Water Rinse, (Tank 5) Water Rinse, (Tank 6) Water Rinse, (Tank 7) Chromate Conversion 60°-100°F
13 Tank Engine Part Cleaning Lines w/Magnus AJA-LIF Tanks
Small 4 Tank Cleaning Line w/Magnus Miji-Lif Tanks
(2 ea) Stainless Steel Rinse Booth

NOTE: A 5% BUYERS PREMIUM WILL APPLY TO ALL PURCHASES AT THIS AUCTION.

NDT EQUIPMENT



Magnaflux Mdl # H-840R Magnetic Particle Inspection Machine, Mag & Demag, Max output 10,000 Amps, 10' Bed



Magnaflux Mdl # MXCF-100MB Burner Can, Ex-ray Machine S/N # 861955, Cabinet Certified at 100KV& 1.0MA in Jan 1987, & Has Magnaflux Mdl # MXEF-100MB Control Panel
Zyglow Inspection Line 34' Long w/Penetrant Tank, Black Light Booth, Emulsifier Tank, Rinse Tank, Zyglow Mdl # ZD-2972-8 Oven & Zyglow Mdl ZP-3072 Dry Developer Station
Magnaflux Mdl # SB-2824T Demag Ring



Brown & Sharp Validator Mdl Reflex 7105 Coordinate Measuring Machine, S/N 0598-33121, New in '98, 32"x53" Granite Table



APU Surge Valve Test Stand, P/N 397868-1-1 (Shop Built)
Turbomotive APU Speed Switch Test Stand P/N R01069

APU SHOP



Schenck Mdl CAB-710 Impeller Balance Stand 65" Bed w/ Plasma Screen Display Speed Range 120-5000 RPM, New in '93

Lanly Electric Oven w/Precision Quincy Mdl 41-550 Controller, 35"D x 30"W x 30" H Inside
(2ea) APU Wiring Harness Boards (1) -85 Series, (1) -331 Series
Federal Air Measurement Table, 4' x 6' x 10" Thick Granite w/Federal Mdl AIE-1300 MIC Concentricity Unit Computer Controlled
Starrett Air Measurement Table w/Federal Gauge Mdl EAS-2015W3 Auto Centering Computer & Form Scan 3000, 4' x 3' x 4' Thick Granite Table



(4ea) APU Transport Carts Mdlair, Mdl 96F 2100-1004-001 & Mdl 98F-2100-1004-001
Kleiber Schulz Inc. Liquid Abrasive Blast System
AFI Mdl 2VL Vibratory Cleaner

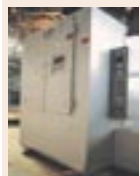


APU Test Cell to include: Test Cell Control Panel, - 85 Test Pipe, - 331-200 Test Pipe, -331-200 Test Pipe, -331-200 Inlet. Daniels Flow Pipe.
Exhaust Duct, All Fixtures & Attachments



Sells Wednesday, September 21 - Pittsburgh - Hangar No. 2

SHOP EQUIPMENT



Precision Quincy Corp Mdl # 42-1000 Electric Oven Maximum w/3 Bank Heater System

(2 ea) Precision Quincy Corp Mdl # 41-550 Electric Oven, Max Temperature 550° F w/Digital Controller & Honeywell Chart Recorder Inside: 30" Wide x 30" High x 34" Deep

Precision Quincy Corp Electric Oven Mdl # 22-1000, 1000° F



Simon 41-42 Boom Lift



Electrical Scissors Lift
Blue Giant Electrical Lift
Sev Air Pigs, Water, & Fuel Reels
Genie Mdl # LH-15P 1000 lb Electric Lift



Jet Mdl # JTM-1 Vertical Milling Machine 2 HP, 42" x 9" 3 Slot Table, 80-5440 RPM Spindle Speed



Clausing Mdl # 1500 Metal Lathe 15" Swing, 5'6" Bed

(3 ea) Landa Mdl # 30-767C, Water Cleaning Systems w/Dual Pumps, PSI 60-75, GPM 40, (Used for Boeing Gear Wash)
Sweco Mdl # FM010 VIBRO Finishing Mill

(2 ea) So-Low Mdl # PR140-5 Environmental Freezer Chests, Temp Range -40° F to 140° F
Kingsley Mdl #2000 Wire Labeling Machine

2 ea Hotsy Steam Pressure Washers Mdl # 550B, 1000PSI
Branson Series 7000 Ultra Sonic Cleaner

3' x 6' Starrett Granite Surface Plate 10" Thick

3' x 3' Granite Surface Plate 5" Thick

Various Binks & Devilbiss Spray Booths (Some Disassembled)

RAMP EQUIPMENT



2000 Ford F-650 Super Diesel Air Start Truck, 6,000 Miles, Ford Diesel Auto. w/Stewart Stevenson TSMAC-250 Air Start Unit
LESS COMPRESSOR, has Detroit 892 turbo Diesel



"88" Ford LN-8000 Stake Bed Truck, Caterpillar Diesel Engine, Auto Trans. w/Sleeper, 22' Stake Bed w/Lift Gate, 82057 Miles



"92" Ford F-250 Pickup, 6 cyl., Auto Trans., Steel Box w/Lift Gate



Air-A-Plane Mdl 5050 Aircraft Heater Cart w/Ohan Mdl L423 Diesel Eng.

(3 ea) Carrier Aircraft AC Units on Carts 460V, 3 Phase, 60 Hz Power Supply

(3 ea) RTM-2000 Automatic Foam Fire Extinguisher Systems



"90" Ford F-600 Catering Truck w/Hiway 16' Box, Auto Trans., V-8

"85" Ford F-600 Catering Truck w/Hiway 12' Box, Auto Trans., V-8

"85" Ford F-600 Catering Truck w/Hiway 16' Box, Auto Trans., 370-2V Engine



Steril Koni Mdl ST-1175 Four Post Vehicle Maintenance Lift, 40,000 lbs, Per Post New in '99 Very Little Use



"89" Ford F-250 Pickup, 6 cyl., Auto Trans.

w/Lift Gate
"83" Ford Ranger Pickup, 4-Spd., 4 Cyl.

"92" Ford Club Wagon Van, 6 cyl., Auto Trans.

"90" & "93" Ford E-150 Passenger Vans, 6 cyl., Auto Trans (Both Need Work)

(2ea) Clark CT-30 Baggage Tugs, 3000 lb. DBP, 1 Diesel, 1 Gas, Auto.

(2ea) Harlan HTA-30D Baggage Tugs, 3000 lbs, Auto Trans. (Needs Work)

"97" Ford F-350 Lavatory Truck w/Stinar Servicing Unit (Needs Work)



Tennant Mdl 92 Drive Around Hangar Sweeper

(2 ea) EZ-GO MDL X18751 Electric Warehouse Carts

(6 ea) 737 Main Landing Gear Transport Cart

Sev Wheel & Brake Dolly/Lifts

(65+) Malabar Ramp Fluid Dispensers, (Used for Skydrol, Turbo Oil, & Esso-2380)

Sells Wednesday, September 21 Pittsburgh - Hangar No. 2

SHEET METAL EQUIPMENT



US Tool Mdl # US 150-
EA Hot Dimpling Ma-
chine, 36" Throat
DoAll Mdl # 3613-20
Power Band Saw
36" Throat, Variable
Band Speed Control
and Blade Welder



Tennsmith Mdl # T-52 sheet Metal Shear, 52", 16 Gauge Cap

AIRCRAFT JACKS



(8 ea) Malabar Mdl # 767A ,60 Ton Aircraft Jack 737, MD80 Wing Jacks, Air Over Hydraulic
(6 ea) Malabar Mdl # 718A 20 Ton Aircraft Tri Pod Jacks, Air Over Hydraulic
(4ea) Malabar Mdl 725A 25 Ton Aircraft Jacks, Air Over Hydraulic
(5 ea) Malabar Mdl # 714A Air Craft Wing Jacks 12 ton Cap
Malabar Mdl # 737 15 Ton, 767 Mid Wing Jacks, Air Over Hydraulic
(2ea) Malabar Mdl # 712A 12 Ton Aircraft Jack, Air Over Hydraulic
Malabar Mdl # 759 Air Over Hydraulic 50 Ton Aircraft Jack
(2 ea) Columbus Mdl # 5063-35 , 50 Ton Aircraft Jack Air Over Hydraulic,
(2 ea) Regent Mdl # 2955 , 50 Ton Aircraft Jack, Air Over Hydraulic
Columbus Mdl # 35122-35, 35 Ton Aircraft Jack, Air Over Hydraulic
Columbus Mdl # 1248-15 12 Ton Aircraft Jacks, Air Over Hydraulic
(2ea) Regent Mdl 989R 40 Ton Aircraft Jacks, Air Over Hydraulic
Columbus Jack 60 Ton Nose Wheel Axle Jack
(3ea) Malabar Mdl # 60P10, 60 Ton Axle Jack, Air Over Hydraulic



(2 ea) Columbus , 25 Ton Axle-Jack, Air Over Hydraulic
(7ea) Regent Mdl 3920U 50 Ton Axle Jacks, Air Over Hydraulic
Colombus 65 & 85 ton Axle Jacks, Air Over Hydraulic

TOOLING and CARTS

(10 ea) 737 Thrust Reverser Transport Stands
Techman-Head Mdl # TMH-RD45 APU Transport Cart
Various Landing Gear Carts
737 Thrust Reverser Sling
RB-211 Engine Cowl Stand
Various Balancing Jigs
Large Selection of Metal Saw Horses

NOTE: A 5% BUYERS PREMIUM WILL APPLY TO ALL PURCHASES AT THIS AUCTION.

TAIL & NOSE DOCKS, MAINTENANCE STANDS & LADDERS

NEW Airbus A-330 Tail Dock NEVER ASSEMBLED



Famco/Forsyth Stationary 737 Tail Dock
(2 ea) 737 Forward Fuselage Stands
(2 ea) 737 Aft Fuselage Stands
(1 Set) 737 Stationary Wing Work Platform
(5 ea) Famco Adjustable 727 Fuselage Stands, Forward, Main & Aft
Several Double Sided Steel Work Ladders
Several 3' & 4' Work Platforms
Several DC-9/MD-80 Aluminum Maintenance Ladders
(13 ea) Bullymore Scissor Lifts Some 15' Lift, Some 21" Lifts 750 lb Capacity w/Several Sections of Scaffold Walk Ways

DC-9/MD-80 Nose Dock
(4 ea) 9' Double Sided Aluminum Maintenance Ladders
(2 ea) 12' Double Sided Aluminum Maintenance Ladders
(6 ea) 8' Aluminum & Steel Work Ladders
(10 ea) Alco-Lite 6' Double Sided Aluminum Work Ladders
(3 ea) 5' Double Sided Aluminum Maintenance Ladders
(4 ea) Alco-Lite 4' Double Sided Aluminum Work Ladders
(15 ea) Louisville 3' Double Sided Aluminum Work Ladders
(2 ea) 727 Engine Work Stands

(2 ea) DC-9/MD-80 Two Piece Tail Docks
(2 ea) DC-9/MD-80 Fuselage Stands
(2 ea) DC-9/MD-80 Engine Work Stands



(2 ea) B-1 Maintenance Stands

CABINETS, SHELVING, SHOP BENCHES, LOCKERS, PALLET RACKS

Approx. 15 Vidmar Cabinets
(100+) Various Size Work Benches Wood & Metal Tops, Some with & without Drawers
(10+) 2 Door Fire Proof Cabinets
(75+) 2 Door Metal Cabinets
Sev. Storage & Work Tables & Cabinets
Several Parts Bins

Several Hundred Employee Lockers Single & Double Units
Very Huge Selection of Metal Shelving, 12", 18", 24" Shelves
Large Selection of Pallet & Bulk Racking
Several Folding Tables
(5ea) Folding Lunch Tables

OFFICE FURNITURE, EQUIPMENT & MISCELLANEOUS

(20+) Office Desks Wood & Metal w/Formica Top Single & Double Pedestal
(100+) Filing Cabinets 2, 3, & 4 Drawer Legal & Regular some Lateral
(100+) Office Chairs Includes High Backs, Secretarial, Tasks, & Side Chairs With & Without Arms

(50+) Book Shelves Wood & Metal Various Shelves
(5) Conference Tables
Folding Tables
Various Size Office Tables
Refrigerator/Freezers
(7ea) Reader Printers include Minolta & Canon

NOTE:

There will be Office Equipment Sold in all of the Shops Throughout the 2 Days.

**Sells Tuesday & Wednesday, September 27 & 28 -
U.S. Maintenance Hangar, 5000 Hangar Rd., Charlotte Intl. Airport**

AVIONICS & INSTRUMENT TEST BENCHES



TCAS Processor/Model S Transponder Test Bench w/IFR S-1403 & IFR ATC-1400A Test Sets, Bendix/King TCAC Interface Panel Mdl # TPT-81A, JC Air TCAS Relay Generator RGS-2000, JC Air TTA-100 Panel & Tektronic 2432A Oscilloscope, Computer & Printer

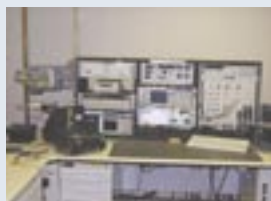


TCAS Processor/Model S Transponder Test Bench w/JC Air SDX-2000 ATC/DME Generator, Bendix TCAS Interface Test Panel TPT-81A, JC Air TCAS Relay Generator RGS-2000, JC Air TTA-100A Panel, HP-8591E Spectrum Analyzer, Tektronic 2432A Digital Oscilloscope & Computer



Model S Transponder IVSI & Test Bench w/JC Air Mdl # SDX-2000 ATC/DME Generator, Bendix King TCAS Interface Test Panel Mdl # TPT-81A, HP Mdl # 8591E Spectrum Analyzer, Tektronic TDS-3032 2-Channel Color Oscilloscope, HP-34401A Multimeter & Ruska Air Data Test Set, (2) Computers

NOTE: A 5% BUYERS PREMIUM WILL APPLY TO ALL PURCHASES AT THIS AUCTION.



Arinc 708 Weather Radar System Test Bench, w/IFX-7708 Test Panel, JC Air RWT-4B Test Panel & RF Delay Unit, Tektronic TDS-3034 Four Channel Color Oscilloscope, Boonton Mdl # 9200A Millivolt Voltmeter, HP-5328A Universal Counter, Tektronic TDS-210 2-Channel Oscilloscope, HP-8640B Signal Generator, Giga-Tronic 8541C Universal Power Meter w/Antenna Dummy Load & Computer



Arinc 708 Weather Radar System Test Bench w/IFR RDX-7708 Test Set, JC Air RWT-4B Test Panel & RF Delay Unit, Tektronic TDS-3037 4-Channel Color Oscilloscope, Tektronic TDS-210 2-Channel Digital Oscilloscope, HP-8640B Signal Generator, HP-5328B Universal Counter, Antenna Dummy Load, Wavetax Mdl # 1080 Sweep Generator, Giga-Tronics 8541C Universal Power Meter, Computer

(1 ea) Color Weather Radar Indicator Test Benches w/Bendix PPT-4A Radar Indicator Test Panel, Bendix TCAS PPT Adapter Test Panel Mdl # ALT-4A, Tektronic TDS-3032 2-Channel Color Digital Oscilloscope & Multimeter Radar Test Bench w/IFR RDX-7708 test Set, IFR DF-7708 Panel, IFR STD-7000 Panel, JC Air FMS-7000 Prom Programmer & Adapters, Computer



Radar Test Bench IFR RDX-7708 Test Set, IFR DF-7708 Panel, IFR STD-7000 Panel, Tektronic TDS-3032 2-Channel Color Digital Oscilloscope, Marconi 2019A Signal Generator To 1040MHZ, Collins CSS-10 Synchro Source & Panel, Antenna Dummy Load, Computer



Weather Radar Test Bench, w/Bendix RCI-4A Radar System Test Panel, Bendix ASI-4A Antenna Simulator Test Panel, IFR RDX-7708 Test Set, Bendix RMT-4A Doppler Signal Generator, Tektronic 2465 Oscilloscope, HP-5334A Universal Counter, HP-8604B Signal Generator

Radar Antenna Test Bench w/IFR DF-7708 Test Panel, IFR STD-7000 Test Panel, Tektronic 2465 300MHZ Oscilloscope Radar Antenna Test Bench, w/Bendix Radar Antenna Test Panel AIT-4A Angle Position Indicator Radar Antenna Test Bench, w/Radar Antenna AIT-4A Test Set, Angle Position Indicator

Acars Communications Flight Simulator & Map Work Bench, w/Teledyne Digital In/Out Test Panel, Analog In/Out Test Panel, Power & Signal Panel, Teledyne Defdars Flight Line Tester & Acars MU test Panel, Tektronic 2445B Oscilloscope

Air Data Computer Test Bench, w/Mdl # HP-8502A Digital Multimeter Kollsman Mdl UG3017AA03, Precision Pressure Controller Test Panel, North Atlantic 8300 Angle Position Controller, Fluke 8502A Digital Multimeter

Air Data Computer Test Bench w/Mdl # UG3017AA03 Test Panel, Arinc 429-2 Receiver, Resolver-Synchro Simulator, North Atlantic 5310, Fluke 8502A Digital Multimeter. North Atlantic Angle Position Indicator, North Atlantic Phase Angle Volt Meter Mdl # 213



(3 ea) Acars System Testing Benches w/Teledyne 2226487-7 Acars Test Set, Texas Instrument 990 Test Set, Tektronic TDS-3032 2-Channel Oscilloscope, Computer

FMS-CDU Test Bench w/Tektronic TDS-3032 2-Channel Color Oscilloscope, HP-3478A Multimeter, FMS-CDU Test Panel & Lambda DC- Power Supply



Radio Altimeter Test Bench w/860-4 Radio Altimeter Test Panel, Tektronic Mdl # TDS-210 2 Channel Digital, Real Time Oscilloscope & HP 432 Power Meter

Radio Altimeter Test Bench w/Altimeter Test Panel & HP 432A Power Meter

Bendix & Collins Radio Altimeter Indicator Test Bench w/(1 ea) Bendix Test Panel, (1 ea) Collins, Tektronic 2465 Oscilloscope, Fluke 45 Dual Display Multimeter



Bendix Radio Altimeter TR-Unit Test Bench, w/Bendix ALT-51 Test Panel w/Delay Line, HP-651B Test Oscillator, HP-5315A Universal Counter, Tektronic 2445 Oscilloscope

Bendix Radio Altimeter TR-Unit Test Bench, w/Bendix ALT-51A Test Panel & Delay Unit, HP-8111A Pulse/Function Generator, Tektronic 2465 Oscilloscope, Fluke Multimeter

Nav Test Bench, w/Bendix RNT-26A VHF Nav Receiver Test Panel, Bendix RNT-34A Nav Recorder Test Set, Bendix RIG-32A ILS Radio Generator, Bendix RVG-33A VOR Audio Generator, HP-8640B Signal Generator, Tektronic TDS-3032 2-Channel Oscilloscope, HP-5004A Signature Analyzer

Nav Test Bench, w/Bendix RNT-30A Test Panel, HP-5335A Universal Counter, BK Mdl # 1660 Triple Output DC Power Supply, Instrument Flight Research Frequency Set

Nav Test Bench, w/Bendix VHF-Nav Receiver Test Panel RNT-26A, Bendix VOR Audio Generator RVG-33A Test Panel, Bendix RNT-34A Nav Recorder Test Set, Bendix MKT-28A MKV Recorder Test Panel, Tektronic 2465 Oscilloscope, HP-6267B DC Power Supply

Nav Test Bench, IFR Nav-750 Test Set, Collins VOR/ILS Test Set, Collins Universal Track Selector

Radio Altimeter Test Bench w/Bendix ALT-52A Altimeter Test Panel, Tektronic 2465 Oscilloscope, HP-435A Pow-

er Meter, Frequency Counter & Printer

VHF Com Transceiver Test Bench, w/Bendix VHF Com Test Panel RIT-44A, Bendix RTT-41A VHF Transceiver Test Panel, HP-8901A Modulation Analyzer, Tektronic 475 Oscilloscope, HP-8640B Signal Generator, HP-331A Distortion Analyzer, Bird Watt Meter

VHF Com Transceiver Test Bench, w/Bendix RTT-41A VHF Transceiver Test Panel, Boonton 8200 Modulation Analyzer, Tektronic 475A Oscilloscope, HP-8640B Signal Generator, HP-334A Distortion Analyzer, Bird Watt Meter

DME Test Bench, w/Bendix DMT-37A DME Test Panel, JC Air SDX-2000 ATC/DME Generator, Tektronic TDS-3034 4-Channel Color Digital Oscilloscope, Collins 975D-2 DME Test Set, HP-339A Distortion Measurement Set, AC Control, Agilent 3401A Multimeter & 53131A Universal Counter

DME Test Bench, w/IFR ATC-1400 DME Test Set, Collins 975D-2 DME Test Set, HP-334A Distortion Analyzer, Tektronic TDS-3032 2-Channel Oscilloscope, HP-5335A Universal Counter, AC Controller

DME Test Bench, w/Collins 975D-2 DME Test Set, Custom Instrument DME/Transporter Test Set, Tektronic TDS-3032 2-Channel Digital Oscilloscope, DC Power Supply, HP-5345A Counter, HP-331A Distortion Analyzer

ADF Test Bench, w/Bendix DFT-75A ADF Test Panel, Bendix DFT-73AA ADF System Panel, Tektronic 465B Oscilloscope, Fluke 6060B/AK Synthesized RF Signal Generator, HP-6267B DC Power Supply, CALF Instrument Mdl # 1040 Dynamic Line Corrector, Collins 477V-2 ADF Test Set, Collins ADF Antenna Simulator 477U-2, Boonton 103D FM/AM Signal Generator

Sundstrand FDR/Radio Altimeter Test Bench w/Sundstrand 964-0301-001 FDR Test Module, Sundstrand 964-0300-001 DFDR Test Module, Bendix AMT-51 Radio Altimeter Test Panel, HP DC Power Supply

Tape Deck Controller Test Bench w/Test Panel, (2 ea) HP-8903B Audio Analyzers, Tektronic 2465 Oscilloscope, Leader LFM-39A WOW & Flutter Meter

Sperry Flight Director Test Bench w/Sperry T-324555 Test Panel, North Atlantic 225 Phase Angle Voltmeter, North Atlantic 8300 Angle Position Indicator

Sundstrand MK V/III DGPWC Test Set w/Bendix CPT-83A CPW System Test Panel, Collins 971T-1 CPWS System Test Panel

Sells Tuesday & Wednesday, September 27 & 28 – U.S. Maintenance Hangar, 5000 Hangar Rd., Charlotte Intl. Airport

AVIONICS & INSTRUMENT TEST BENCHES *Cont.*

Position Sencor/Electronic Clock Test Bench, w/Sperry Position Sensor Test Panel, Phase Angle Voltmeter, North Atlantic 8300 Angle Position Indicator, Electronic Clock Test Panel, HP-5335A & HP-5328B Universal Counter

Digital Stall Warning Test Bench w/HD-5229 Test Panel, Lambda DC Power Supply

(2 ea) Cockpit Voice Recorder Test Bench, w/Cockpit Voice Recorder Test Panel, HP-339A Distortion Measurement Set, Leader LFM-39 WOW & Flutter Meter, Vector Wd-7667 Digital Wattmeter, Voltage Adjust Panel

Cabin Pressure Controller Test Bench for CPC-21 Controller, Kollsman Pressure Controller, Mdl # GS8001-110 Hamilton Standard Cabin Pressure Controller Test Set

(2ea) Cabin Temp Controller Test Bench's w/Cabin Temp Controller Test Panel, Tektronic 2445A Oscilloscope

Cabin Temp Controller Test Bench w/ Cabin Temp Controller Test Panel

(2 ea) Audio Selector Test Bench w/Audio Selector Test Set, HP-339A Distortion Measurement Set, Output Power Meter

Passenger Address & Audio Accy Unit Test Panels

Passenger Address Amplifiers Test Set, Nav Com & Transponder Control Head Test Panels

Radar Control Head Test Panel

(2ea) Nav Com/DME Control Head Test Panel, Speaker Intercom Test Panel

Hamilton Standard Cabin Press & Outflow Valve Test Panels

FDR Mach Warning Test Module

Selcal Test Panel

ATE BENCHES & ADAPTORS



Iris 2000 w/429 Automatic Test Equipment, w/Iris 2000 Navair Programmable Interface Panel, HP 3478A Digital Multimeter, HP 5334A Universal Counter, IFR ATC-1400A Test Set (2ea) IFR Nav-750BR Signal Generator w/Gateway EV700 Intel Pentium III, JC Air Airinc 429 Interface Panel

ATE BENCHES & ADAPTORS



Iris 2000 Digital Pressure Automatic Test Equipment, w/IRIS2000 Programmable Interface Panel, HP-5334A Universal Counter, HP-3478A Digital Multimeter, North Atlantic 8810 Angle Position Indicator, JC Air ADC-800 Air Data Systems Tester, Gateway Computer, JC Air 429 Interface Panel, JC Air IRIS-2000 Expansion Interconnect Unit, JC Air Expanded Resources Unit, Power Supplies



Iris 1000 Auto Test Equipment w/JC Air Honeywell IRU Platform #55-0378-00 w/Iris UIU 1000 Interface Unit, HP 3478A Digital Multimeter, HP 53132A Universal Counter, Gateway Computer & Epson Printer, Power Supplies

Iris 2000 Automatic Test Equipment w/Iris-2000 Transponder/DME Test Panel, 5334 Counter, IFR/ATC-1400 Test Set, IFR NAV 750-B Test Set, Arinc 547 NAV Receiver, Gateway Computer, Iris 2000 JC Air Programmable Interface Unit, Power Supplies

(2ea) Martron 1200 ATE System w/Several Test Boxes

ATE Test Boxes Include, JC Air Honeywell HG480B4X DADC Interface, JC Air DMA-37A Interface, Bendix RVA-36A VOR/MKR Receiver Interface, Bendix RIA-35A ILS Receiver Interface, Nav Air Arinc 568 DME Interface, Nav Air Arinc 547 Nav Receiver Interface, Nav Air Arinc 568 DME interface, (2 ea) Nav Air Arinc 5210 DME Interface, JC Air TRA-65A Interface, RTA-44A VHF Transceiver Interface, JC Air Honeywell FCC Interface, Nav Air Arinc 546/566 VHF/COM Interface, Boeing Autoslat Computer Interface, Honeywell DAA Computer Interface, Boeing Autoslat Computer Light Sensor Interface, Smith's 735-SUE Auto Throttle, Hiwell Mode Control Panel Interface, CDU 2577B Control Display Unit Interface, Smith's 2904 FMC Interface

AVIONICS & INSTRUMENT TEST SETS

Sencore LC-102 Auto Z Capacitor Inductor Analyzer
(3ea) Kollsman Precision Pressure Controller Monitor P/N 89944-1890581000



(6ea) Barfield Mdl 1811H-161 P/N 101-00168 & 101-00165 Pitot Static Test Sets
(10ea) Welch Mdl # 1402 Dual Seal Vacuum Pumps
(5ea) Meiji Microscope w/Fiber Lite Mdl FL-180 High Intensity Illuminator & Various Others
Lambda & Harrison Power Supplies, To Include: Mdls: 0-10V DC, LK-343A, LK-342, LG-521, LQ-520
(4ea) BK 1760, 1660 Triple Output DC Power Supply
Harrison 6205B Dual DC Power Supply
(2ea) Elgar Mdl 503A AC Power Source
(2ea) HP-6267A & 6284B DC Power Supply
HP-6255A Dual DC Power Supply



(18ea) Tektronix Oscilloscopes 475A, 465B, BK 1660, 2430 A, 2246, 468, 7603 & TDS 3052, Etc.
Tektronix 2432A Oscilloscope
(3ea) Tektronix TDS-210 2-Channel Digital Real Time Oscilloscopes
Wavetek 178 50MHZ Programmable Wave-Form Synthesizer
Sperry ADT-222B Air Data Test Set
HP-8562A Spectrum Analyzer 1KHZ-22GHz
Several Metcal RF Soldering Irons (100+) Weller Soldering & De-Soldering Irons
Pace Mdl 8888-0825 Solder Fume Extractors
(75+) Fluke, H.P., Phillips, Agilent, Digital Multimeters; Several Models
(8ea) Simpson Multimeters
(10ea) HP 427A Voltmeters 3400A, 400 EAC
Boonton 9200B RF Voltmeter
DuPont Wire Crimpers/Strippers
Large Wire Pico Pneumatic Wire Crimp-er
Deutsch Power Supply (Manual & Pneumatic)

(3ea) GDI Electrical/Connector Kit DC-9 & MD80 Series
Very Large Selection of Wire Crimpers, Strippers, Pin Insertion, Daniels, Amp, ITT Cannon
Instrument Vises
(6ea) HP 5334B Universal Counter
(3ea) HP 8640B Signal Generator
(2ea) Huntron Mdl 2000A Tracker
Phillips PM-6669 120MHz Universal Frequency Counter
HP-8590A Spectrum Analyzer
(2ea) Wavetek Sweep Generator Mdl\2001
Log Lin RF Peak Power Meter
HP-5004A Signature Analyzer
Metcal Mdl MX-500P-11 Chip Remover/Install System
(2ea) Huntron Mdl HSR-400 Switcher Chip Tester
Giga-Tronics 8541 Universal Power Meter
(2ea) HP 435B Power Meters
Tektronix High Voltage Probes
Desco Surface Resistance Test Set for EOSIESD-S 4.1 Surface
Brady Handi Mark Portable Label Maker
HP-6200B DC Power Supply
(2ea) Sencor 2-Meter Capacitor/Inductor Analyzer
Boonton Mdl 4200 Micro Watt Meter
HP-8900C Peak Power Meter
HP-651B Test Oscillator
Older Sperry Auto Pitot Test Sets for SP-50 Autopilot
Fluke 200 IC Test Clip
(2ea) Arinc Mdl 429A Bus Analyzer
Autopilot Accy Unit Test Set for 65-32817-5
North Atlantic 8300 Angle Position Indicator Panels
(3ea) North Atlantic Mdl 212C & 225 Phase Angle Voltmeters
(2ea) Huntron Tracker 2000's
(3ea) HP-339A Distortion Measurement Set
Decibel Meters
Sencor Mdl FC-71 Frequency Counter
Textronic TM-506 Sweeping Function Generator
HP 5316B Universal Counter
(2ea) Data 10 Mdl 29B & PSX-400 Chip Programmer
Spectroline PC-2200A UV Eprom/Wafer Erasing System & Programming Computers
Large Selection of Timers
Several Hundred Decade Boxes
Large Selection of 727 & 737 Accessory Breakout Boxes
Very Large Selection of Resistors, Diodes, Capacitors, Chips, Wires, Circuit Boards, Pins, Co Axial Connectors, Hardware, Relays, Fuses, Tie Wraps, Heat Shrink, Crystals, Tubes, Canon Plugs, Etc.
IFR-2946A Avionics Communicators Service Monitor

NOTE: A 5% BUYERS PREMIUM WILL APPLY TO ALL PURCHASES AT THIS AUCTION.

**Sells Tuesday & Wednesday, September 27 & 28 -
U.S. Maintenance Hangar, 5000 Hangar Rd., Charlotte Intl. Airport**

**SHELVING, BENCHES, AVIONICS
TABLES & CABINETS**

- (13ea) 2 Door Fire Proof Cabinets
- (57ea) 2 Door Metal Cabinets
- Large Selection of Sturdilite Avionics Test Benches w/ Anti Static Top Full Power
- Several Metal 6' Shop Benches
- Very Large Selection of Metal Shelves 12", 18", & 24"
- (100+) Shop Stools
- Several Parts Carts
- Several Metal Box Shelves 6' & 7' Tall
- (29ea) File Cabinets
- (9ea) 3' H Lyon 2 & 1 Door Cabinets
- Pigeon Hole Parts Bins
- Bench Lights
- (34ea) 2-Door 3' Storage Cabinets

- (19ea) Small Cabinets
- (17ea) Avionics Benches
- (12ea) Shop Benches

**UPHOLSTERY
&
CARPET
SHOP**

- Juki Mdl LK-980 Surging Machine
- Consew Mdl 395 Surger
- Siruha Mdl 757D Surger
- (2ea) Older Consew Surgers
- (9ea) Consew Commercial Sewing Machines, 255RB n& 206

**NOSE DOCK,
STANDS &
RAMP
EQUIPMENT**

- (2ea) 737 Nose Docks, Famco/Forsythe
- (2ea) Forward Boeing Fuselage Stand 737-767
- (2ea) Aft Boeing Fuselage Stand
- B-4 Stand
- B-1 Stand
- (2ea) Jib Cranes
- Jet A Fuel Cart
- JT-8-200 Transport Stand
- Wheel Dolly's
- (2) Clark Baggage Tractors
- (3) Hammond Biocide Carts
- 1989 Ford F-250 Pickup
- Herta 15,000 Lb. Vehicle Maintenance Lift, 4 Post
- Clark Mdl. C40B, 4,000 Lb. Forklift, Propane

**GROUND COMMUNICATIONS
& X-RAY EQUIPMENT SHOPS**

- IFR FM/AM 1000's Test Set
- Data IO System 19 Chip Programmers
- EPSCO Mdl # NFB Filtered DC Power
- Tektronic 2236 Oscilloscope
- Sensor Mdl # CR70 Universal CRT Analyzer Restorer
- PE Mdl # 6-VHF-A Electronic Counter
- Racal-Dana 9009 Modulation Meter
- Large Sel of Vehicle & Ground Communication 2-Way Radios 2 Frequency
- Large Sel of Repair Parts For Baggage, X-Ray Machines, & Walk Thru Screeners

**COFFEE MAKER & ELECTRICAL
COMPONENT SHOPS**



- (10ea) Coffee Maker Test Benches
- (2ea) TIA Control Card Test Set for 500-387 Coffee Brewer
- Lambda Mdl LK352-FM Regulated DC Power Supply
- (3ea) Lambda Power Supplies DCLK343-A
- TCR Power Supply 208/220 Volt Input

- (3ea) Pressure Gauges
- Delta Design Mdl 9023 Environmental Chamber for Testing Switches
- (3ea) Emergency Light Pac Battery Chargers
- (2ea) Emergency Light Battery Charger/Tester
- Airbus PSU Test Set
- Drain Mast Heater Test Box
- (3ea) Aero Quality Trickle Battery Charger Analyzers
- Control Surfaces Bearing & Tools
- Weller Soldering De-Solder Guns
- Heat Guns
- Rechargeable Screw Drivers

SHOP EQUIPMENT



- Blue M Oven Friction Air Static Free Oven 24 x 24 x 21
- Grieve Mdl LW 201C Lavatory Oven 18" W x 16" H x 11" D
- Delta 17-900 Floor Mdl Variable Speed Drill Press
- Delta Mdl 15-350 Floor Drill Press, Variable Speed, 300-4700 RPM
- Ellis Mdl 8000 Drill Press, Variable Speed
- Dayton 20" Drill Press Floor Variable Speed
- Clausing Series 16SC Bench Top Variable Speed Drill Press
- Hi-Shear BH245 Air-Hydraulic Power Unit & Puller
- Ultrasonic Cleaning Bench L&R Model 210 Ultrasonic Cleaner
- Sunnen Mdl MBB-1600 Precision Horizontal Honing Machine
- Starrett 24 x 24 Surface Plate 6"
- No.3 Arbor Press
- 3 1/2 x 3 1/2 Binks Solvent Spray Booth

- B&D 14" Band Saw
- Dayton 6" Belt & Disc Sander
- (3ea) Engine Hoists
- Platform Scale
- Commercial Dryer
- (4ea) Airlow System Portable Industrial Air Cleaners
- Bench Grinders
- Victor Regulators
- Chatillion DFI 10 Digital Force Gauge

**BATTERY
SHOP**



- (13 ea) Christie Mdl # RF80-H Nicad Battery Charger/Discharge
- (3 ea) Christie RF80-GT Nicad Battery Charger/Dischargers
- (2 ea) Christie RF80-K Reflex
- (6 ea) Trickle Charger 5 AMP Max
- (2 ea) Aero Quality Fill Master Mdl # 262 Battery Fillers
- Ultra-Vibe 45 Bench Top Thumlers Tumblers

**NOTE: A 5% BUYERS PREMIUM
WILL APPLY TO ALL PURCHASES
AT THIS AUCTION.**

**OXYGEN BOTTLE &
SLIDE SHOP**



- Hydro-Test Products- Automated Hydro Static Test Stand, Computer Controlled w/Bottle Standards up to 10,000 PSI, w/ Bottle Drying Systems



- Hafkel Mdl 26968 Gas Booster & Filling Stand
- Several Bottle Vices
- Large Selection of Slide Packing Fixtures 737, 757, 767 & All Airbus Incl A330 (*From Air Cruiser & BF Goodrich)
- (3ea) Shop Built 150° Slide Heating Ovens
- DME Corp Mdl T6-14 Evacuation Slide Test Set
- Gould Mdl 42-8240-10 4-Channel Thermo Array Recorder
- Oxy Mask Test Set
- Bauer Compressor for Oxy Mask Testing
- Various Meridian Pyrometers
- Various Slides Tooling & Temp Plates



- (2ea) Eagle Simplex Mdl 60-2FSO Bottle Filling Stations

**Sells Tuesday & Wednesday, September 27 & 28 –
U.S. Maintenance Hangar, 5000 Hangar Rd., Charlotte Intl. Airport**

**CALIBRATION LAB MASTERS FOR AVIONICS INSTRUMENTATION &
MISC. TEST EQUIPMENT & INVENTORY**



Portable Calibration Cart w/ HP-70206A Systems Graphics Display, HP-7000 System Spectrum Analyzer, HP-8640B Signal Generator
 Portable ATE Calibration Carts, w/Fluke 5700A Calibrator, Fluke 5725A Amplifier, Computer
 Large Selection of Overhaul Parts for Test Equipment Including: Simpson Meters, Reostats, Motors, Plugs, Connectors, Wire, Hardware, Flow Meters, Power Supplies, Circuit Boards, Tubes for the following types of Equipment: Fluke, Simmonds, Simpson, Textronix, Weller, Sperry, North Atlantic, Kollsman, Mensor, Ruska, Sencor, HP, IFR, Lamda, Loral, Cooper, Fluke Elgar, Collins, Aero Quality, Barfield, Bendix, Beckman, Booton, Etc.
OVER 16 2 DOOR CABINETS FULL OF INVENTORY
 Several Decade Boxes



HP 87190 Network Analyzer 50Mhz-13.5 Ghz
 Spectracom Mdl 8197 GPS Ageless Master Oscillator
 Boonton 8201 Modulation Analyzer
 Arinc 429/429-C Receiver Code Display
 Voltmeter Voltage Dividers
 Several Voltage Controllers
 NA2250 Digital Analyzing
 (5ea) NA 8300 & 8800 Angle Position Indicator
 Huntron Tracker 2000
 Omega Mdl OMNI-CAL-8a-110 Omni-Cal
 Omega Ice Point Cell Calibration Cell
 Light & Ultra-Violet Meters
 Leak Detectors, Strobotac
 Agilent 3458A Multimeters (Large)
 (3ea) Bird Watt Meters Output Power Meters
 Several Pressure Gauges
 Large Selection of Calibration Weights
 Portable ATE Calibration Cart, w/ Fluke 5520A Calibrator & Computer



High & Low Pressure Test Bench w/(2ea) 5,000 PSI Gauges & (2ea) Druck Mdl DPI-510 Pressure Controller Calibrators
 Micrometer Standards Master Gauge Block Set
 (Set) Bore Gauge Setting Rings
 (Set) Starrett Master Dial Indicator Setting Gauge
 Headset Test Set
 (3ea) NA-215 Phase Angle Voltmeter
 (2ea) Phillips PM-2525 Multimeters
 Several Micrometers (Several Sizes)
 (2ea) 18" x 12" Granite Surface Plate
 (2ea) 12" x 12" Granite Surface Plate
 Several Dial Indicators



Aircraft Scale Load Cell Calibrator
 (1ea) High & Low Pressure Test Bench (Shop Built) w/Vac & Pressure Gauges
 Large Amount of NEW Pressure Gauges & Hydraulic Fittings
 (2ea) Amtek Mdl TQ-30 Dead Weight Testers w/Brass Weights
 Ruska Mdl 2411 Dead Wt Gauge Auto Prompt Converter W/2465-754 Gas Lubricated Dead Wt Gauge
 Ruska Mdl 3930 Pressure Controller-Ruska Series 6200 Portable Pressure Gauge
 Alphasatron Mdl MPT-200A Wire Crimp Pull Tester 200 lb Max Capacity
 (8 Sets) of Master Gauge Block Sets .015 - .04 Up To .699-.750
 Blanchette Mdl 4239 Height Gauge w/ Blanchette BTG-1 Digital Readout
 (3ea) Starrett Mdl 258 Digi-Check Height Gauge



Snap On TBT-600 Torque Wrench Calibrator w/3 Norbar Torque Wrench Digital Readout Analyzers
 HP 8904A Multifunction Synthesizer DC-600 KHz
 Sencore PR-570 Variable Isolation Transformer & Safety Analyzer
 Andeen 2500A 1KHz Ultra Precision Capacitance Bridge
 (3ea) HP 5334A & 5335A Universal Counters
 (2ea) HP 8640B Signal Generator
 HP-339A Distortion Measurement Set
 HP Amplifiers 1-400 MHz
 (6ea) HP Power Meters 435B, 436A, 3400A, 432A, 8900
 HP-8901A Modulation Analyzer
 HP-8903A Audio Analyzer
 TEE80 Test Interface Rack
 (2ea) HP 5385A Frequency Counters
 (2ea) HP 6255A & 6267B DC Power Supplies
 Fluke 8502A Digital Multimeters
 (2ea) HP 239A Oscillators

NOTE: A 5% BUYERS PREMIUM WILL APPLY TO ALL PURCHASES AT THIS AUCTION.

Sells Thursday, September 29
5535 Wilkinson Blvd. - Charlotte, North Carolina

WHEEL & BRAKE SHOP



AEM Mdl 701-30AG Abrasive Brake Disc Grinder, S/N M04527 2/ 124" x 20" Magnetic Chuck, Abrasive Belt Speed 6200 SFPM, Workbed Stroke 42", Workbed Speed 1" to 10" Per Sec., Work Operating Opening between Contact Drum and Bed, 6" to 14" w/AEM CF-60-200 Helicone Coolant Filter Reclaimer



Enerpac 30 Ton Hyd H Frame Press



(2ea) ANDEC Aircraft Wheel Testing System Mdl # AWPO2 w/ Rohmann GMBH Model # PLE-UU EDDY Current Test sys. Computer Programmable



Several Bead Break Fixtures Main Wheel & Nose Wheel to include 737-757-767-A319-A320-A330



(3ea) Bauer Mdl BEI-3691D Auto Tire Inflation Cages
 (3ea) Bauer Mdl P/N 5012001 Auto Tire Inflation Cages



Cooper Mail Wheel & Nose Wheel Denuttrer w/ Cooper Control Panel



Brake Pressure Test Bench Shop Built Can Do 737 Thru A-320 Brakes Double Cabinet & Controls To Do 2 Brakes at once (Extra Nice)



(3ea) Bauer Universal Wheel Build up Stands Mdl # 8071007, w/ Cooper Mdl # M-Pro 400 Nut Runner Control System
 Bauer Mdl # BEI 3605B Universal wheel Build up Stand w/ Cooper M-Pro 300 Nut Runner
 Stainless Steel Rinse Tank



APROX. 2 Sets Bauer wheel Nut Rings 737-A320 Mains & Noses



AEM Mdl 75-30 Abrasive Brake Disc Grinder S/N M0-5428 w/ Walker Interloc 20" X 24" Electric Chuck & AEM Mdl CF-60-600 Helicone Coolant Filter Reclaimer



(2ea.) Bracker Radial Mdl. RN-280 Noiseless Brake Riveters, Air Over Hyd, S/N-25193 S/N-26646



Columbus Jack Mdl 667R-1000A, Tire Bead Breakers, Pneumatic



Greive AA-500 Electric Oven max Temp 500°F 24" x 24" x 24" Inside

Brake Build Up Fixtures 737-A330

Dake 50 Ton Electric over Hydraulic H Frame Press

Blue M Mdl # CD-15066-HP Electric Oven; Temp Max 650° F; 36" X 26" Deep X 38" High

(2ea.) Magnus Mdl. MALH Hot Agitating Cleaning Tanks, 1000LBS Load Cap, 490 gal Tank Cap, Stainless Rinse Tank

Blast IT All Mdl 3636-7 DC Blast Cabinet w/ Reclaimer

LS Ind. Rock Shaker M2L #7S, S/N 00-01-1466S

So-Lo Mdl PR140-5 Ultra Low Freezer Temp Range -40 to -140° F

Rokford MLL 10A-R16 Hardness Tester

Several Wheel Sockets
 Brake Plate Straightening Fixture



(2ea.) Quality Aircraft Tooling Hyd Brake Disc. De Riveters w/ OTC High Press Hyd Power Units Mdl. PQ60 Up to 15,000 PSI 1 Machine for 737 Brake & For 1 767 Brakes



(2ea.) Magnus Magna LIF Mdl MALH Hot Agitating Clean Tanks, Load Capacity 1000 lbs., Tank 490 Gal

(2ea) Columbus Jack Mdl 715J-1000A, Tire Bead Breakers, Pneumatic

Salicor Corp Mdl 138-2000, Tire Bead Breaker Pneumatic

Misc Impact Wrenches
 Bearing Washer

Hoffmann Mdl 22011 Wheel Balancer

(23ea) Brake Assy Transport Carts

New Full set of Messive- Bugatti (Air Bus) Brake Tooling

Dake #4 Floor Model Arbor Press

Cooper Mdl S951201 Cooper Nut Setter Calibration Set

CLEANING TANKS

Magnus Hot Agitation Clean Tank
 Stainless Steel Clean Tank & Rinse Rack

OVERHEAD HOIST & TROLLEYS

(2ea) Sun 500 lb. Electric Hoists w/12' Trolley & 10' Rails

Sun 550 lb. Electric Hoist, 54' Rails 14' Trolley
 Dual Sun 550 lb Electric Hoists w/63' Bridge & 18'Trolleys

Sun 550 lb. Overhead Electric Hoist 40' Bridge, 20' Trolley

Demac 275 lb. Electrical Jib Crane
 1000 lb. Electrical Hoist 36' Bridge, 20'Trolley

550 lb. Sun Electric Hoist on Swing Arm
 (2ea) 500lb. Overhead Electric Hoist, 55' Rails
 (1ea) Jib Crane

Free Standing Overhead Hoist System w/500lb. Electric Hoist, 18' Bridge, 18' Trolley



Dake Mdl 28-004 Hyd Brake Rivet Punch, 1600lbs @ 193 PSI to 16,000 lbs @ 1929 PSI
 Scott Skydrol Reclaimer Bench



Zero Mdl BNP65-600 Bead Blast Cabinet w/ Reclaimer & Filter

(3ea.) Salvant Spray Booths
 Vibratory Finishing Mill

STARMAN BROS. AIRLINE SERVICES, INC.

9000 NW 15TH STREET ■ MIAMI, FL 33172
 (305) 477-6865

STARMAN BROS. AUCTIONS INC.

1240 Royal Drive ■ Papillion, NE 68046-2082
 (402) 592-1933

**Sells Thursday, September 29
5535 Wilkinson Blvd. - Charlotte, North Carolina**

MACHINE SHOP



Alliant Mdl # RT 2 Vertical Milling Machine; 2H.P. Head, XY Digital Read Out; 40" X 9" Three Slotted Table; Spindle Speed 60 RPM-4500 RPM w/Rapid Traverse



Bridge Port Series I Vertical Milling Machine 2H.P., XY Digital Read Out, 9" X 48" Three Slotted Table, Speed 80 RPM-4200 RPM w/ Rapid Traverse
Bridge Port Series I Vertical Milling Machine 2H.P., XY Digital Read Out, 9" X 40" Three Slotted Table



(2ea) Clausing 15" Gear Head Engine Lathes, 50" between Center, 15" swing over Bed w/ Tapper Attach, 2 1/8 hollow Spindle
Jet Mdl 1340 GHE Geared Head Lathe, 13" Swing, 56" Bed
LeBlond Makino 15" Regal Engine Lathe, 2 1/8 Spindle Hole, 15" Swing, 50" Bed



TOS Trencin Mdl S/N 40B Universal Centre Lathe (Gap Bed) 1000mm turning Length, 2575 mm, 16" swing over bed, 26" over gap



DoAll Mdl D618-7 Surface Grinder



DoALL Mdl 1611-8 Band Saw 16" Throat



WF Wells Horizontal Power Band Saw Mdl # F16-1
Dake 50 Ton Electric Over Hydraulic H' Frame, Press Mdl # 181811
Blast IT All Blasting Cabinet Mdl # ABC3636P-2 w/ Reclaimer
Rockwell/ Delta 6" Belt & Disc Sander
Dake Johnson VH-40 Vertical Band Saw, 40" Throat, Tilt Table

SHEET METAL SHOP



Wysong Mod #1010 Power Shear 10' long w/Back gauge



Chicago 6' Finger Brake Whitney Jenson Mdl. # 514, 5' Finger Brake National Mdl. #N5216 Sheet Metal Shear 52" 16 gauge
Dake Mdl V-24 Band Saw w/24" Throat w/Blade Welder
Lucifer Mdl HL-7024-R48 Elec. Furnace, 2300° Max temp w/Chart recorder & digital read out, 26" w X 52" d X 46" T INSIDE Measurements



WYSONG Mdl 772 Power 6' Sheet Metal Shear w/Back Gauge, 3/16" Capacity



Rotex Mdl. #18-13 Sheet Metal Hole Punch



(2ea) Chicago Mdl #812 8' Sheet Metal Brakes



Dake Johnson Mdl. #V24 Vertical Band Saw w/23" Throat w/Blade Welder

NOTE: A 5% BUYERS PREMIUM WILL APPLY TO ALL PURCHASES AT THIS AUCTION.

COMPOSITE SHOP



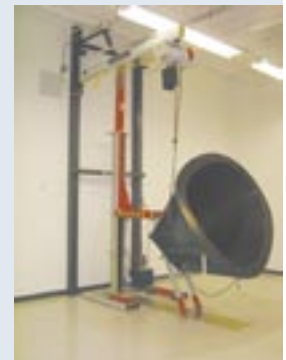
Donaldson Mdl ECB5 Down Draft Sanding Booth w/ Donaldson Control System 36' w X 9' deep



Binks Paint Booth, 27'L x 15' W Self Contained, Explosion Proof Lighting, Vent System, Trane Air Handling System
Control Surface Balance Beam w/737 elevator & Aileron Attachment, 757-767 Aileron & 767 Rudder, 737 Rudder Attachments



Precision Quincy Corp Mdl # 72-650B Electric Furnace, 500°F, Double Door w/Roll Out Cart, 6'x6'x6' Plumbed for Air
Large Selection Control Surface Racks & Saw Horses For Composites
Several Paint Drying Stands
(21ea) Composite Shop Work Tables, 14' x 5'



Shop Built Radome Rotating Repair Stand w/3 ea 737 Radome Molds
(3ea) Famco Mdl RS-1 Radome Sanding Stands
Shop Built Laser Radome Paint Guide
Bally Walk In Freezer, 8'W x 14'L, New 737 Flap Jig

**Sells Thursday, September 29
5535 Wilkinson Blvd. - Charlotte, North Carolina**

LAVATORY EQUIPMENT



Monogram Sanitation Vacuum Toilet Pump Test Stand
P/N 18000-001
Stainless Steel Clean Tank & Rinse Rack



ADF Mdl 3031 Water Blast Cabinet
Magnus Hot Agitation Clean Tank

WASHERS



Continental Hot Water Rotary Turntable Washer, Natural Gas Burners w/Wash, Rinse & Blow Dry Cycle, 26" Round Rotary Table, 4' x 4 1/2' Door Opening & Exhaust Scrubber

Continental Equipment Company Hot Water, Rotary Turntable Pressure Washer Machine # PW98-C0583, Natural Gas Burners, Wash, Rinse & Dry Cycle, 36" Round Turntable. 48" x 4 1/2 Door Opening w/Exhaust Scrubber
Continental Equipment Company Pre-Wash System Wheel Washer Machine #PW98-FBO579 w/ 22' Conveyor, Wash Only Line, Natural Gas Burners w/Exhaust Scrubber



Mart Mdl Cyclone 2.2 Hot Water Rotary Parts Cleaner, 90 gal. Reservoir, Electric Heaters, 24" Rotary Table, S/N 6606, Mfg. 1996

(2ea) Continental Equipment 2 Stage Hot Water Wash Rack w/Iridite & Fresh Water Spray, Natural Gas Burners, 33' Conveyor System, Self Contained on Skids

MISC. SHOP EQUIPMENT

Production Systems Gas Fired Drive In Furnace, 21' D x 8' W, Self Contained, Free Standing 500° F
Clausing 2223 Variable Speed Drill Press 100-2000 RPM
Clausing Mdl. #2221 Variable Speed Drill Press, 150-2000 RPM
Solberg Mdl. #S-57100 Milling Drilling Machine, 60-1430 Spindle Speed
Miller Syncrowave 350 Constant Current AC/DC Arc Welding Power Source, Argon, Gas Attachment, Water Cooled, 200/460 V, Single Phase
Welding Table & Curtains
Magnus Magnalift Mdl. #MALH, Hot Agitating Clean Tank, Load Capacity 1000 lbs., 490 Gal. Cap. Tank

Binks Varsol Spray Booth w/Exhaust Fan 4'x4'x4'
Paint Spray Booth, 56" W x 36" D
3'x3' Solvent Spray Booth
Air Flow System Mini Pac Portable Air Cleaner
Several Engine Slings & Lifting Fixtures
Milnor Commercial 50 lb. Wash Machine
Dual 3" Belt Sander
Baldor 3/4 HP Pedestal Grinder
Baldor 2" Belt Sander
Famco & Drake Arbor Press
Baldor 3/4 HP Double Pedestal Grinder
Several Pallett Jacks
Several Dayton 32" Shop Fans Pedestal & Wall Mounted
Stainless Steel Tank 30' L

NDT EQUIPMENT



Magnus Mdl #AD-945 Magnetic Particle Inspection Bench, AC/DC, Mag & Demag, Max Output 4000 Amps, AC & 5000 Amps DC, 6' Bed, New Unit



Zyglo Mdl ZA-2H Dye Penetrant Inspection Line w/ZL37 Tank, Rinse Tank ZR 10B Tank, Black Light Booth, Dryer & ZP 58 Tank Unit 16' L



737 ELEVATOR TAB HINGE ALIGNMENT FIXTURE
Boeing 737 elevator Tab Hinge Fitting Alignment Fixture

BENCHES, CARTS, CABINETS & SHELVES

(23ea) Vidmar Cabinets Various Sizes
(14ea) 2 Door Fire Proof Cabinets
(30ea) 2 Door Metal Cabinets
(15ea) 8' x 2' Metal Work Tables
(12ea) Shop Tables Various Sizes
(10ea) Parts Cabinets
(10ea) Foreman Stands
Several Bulk & Pallett Racks
Good Selection of Metal Shelving Various Size Shelves
(26ea) Metal Carts on Rollers

NOTE: A 5% BUYERS PREMIUM WILL APPLY TO ALL PURCHASES AT THIS AUCTION.

STAR MAN BROS. AIRLINE SERVICES, INC.

9000 NW 15TH STREET ■ MIAMI, FL 33172
(305) 477-6865

STAR MAN BROS. AUCTIONS INC.

1240 Royal Drive ■ Papillion, NE 68046-2082
(402) 592-1933

**Sells Thursday, September 29
5535 Wilkinson Blvd. – Charlotte, North Carolina**

**OFFICE EQUIPMENT,
LOCKERS, READERS
& PRINTERS**

(40ea) Office Desks, Wood & Metal, Double & Single Pedestal
(35ea) Filing Cabinets, 3 & 4 Drawer, Reg. & Legal, Some Lateral
(20ea) Book Shelves, Wood & Metal
Large Selection of Office Chairs, High Back, Secretarial, Task & Side Chairs
(93ea) Single & Double Employee Lockers
Computer Tables
Coat Racks
Formica Top Tables
Refrigerator Freezers
Folding Tables
Water Machines
Micra Chem Wash Stations
(3ea) Minolta Reader Printers Mdl. # RP6032
(1ea) Cannon PC-80 Printer

FORKLIFT



Caterpillar Mdl. #V300B Forklift, 30,000 lb. Dual 12:00 x 20 Tires, 24' Mast Hyd. Shifting Fork, Cat 3208 Engine Diesel

**NOTE: A 5%
BUYERS
PREMIUM WILL
APPLY TO ALL
PURCHASES AT
THIS AUCTION.**

Sale Order

**Tuesday, September 20
Pittsburgh**

Avionics & Instrument Shop, Hydraulic Shop, Electrical Shop, Machine Shop, ARMS Waterjet System, Engine Tooling, Ovens, Blast Cabinets & Vibro Mills, Paint Booths, Welding Equip., Misc. & Sheet Metal Equip., Overhead Hoists & Trolleys, Mezzanines, Chromate & Cleaning Lines, N.D.T. Equip., A.P.U. Shop, Misc. Office Equip. in all shops.

**Wednesday, September 21
Pittsburgh**

Shop Equip., Aircraft Jacks, Sheet Metal Equip., Ramp Equipment, A-330 Tooling, Tooling & Carts, Tail & Nose Docks & Stands, Airbus A-330 Tooling, Cabinets, Shelving Benches, Racks, Office Equip.

**Tuesday, September 27
Charlotte**

Avionic & Instrument Test Benches, ATE Benches, Avionics & Instrument Test Sets, Shelving, Benches, Avionics Benches, Calibration Lab Masters For Avionics Instruments & Misc. Test Equip.

**Wednesday, September 28
Charlotte**

Shop Equipment, Battery Shop, Ground Communications & X-Ray Equip., Coffee Maker & Electrical Components Shops, Oxygen Bottle & Slide Shop, Upholstery & Carpet Shop, Nose Docks, Stands & Ramp Equip.

**Thursday, September 29
5535 Wilkinson Blvd., Charlotte**

Wheel & Brake Shop, Machine Shop, Sheet Metal Shop, Composite Shop, Lavatory Equip., Overhead Hoist & Trolleys, Misc., Shop Equip., Washers, N.D.T. Equip., Benches, Carts, Cabinets, Shelves, Office Equip., Lockers, Racks, Benches, Forklift.

NOTICE

Late Addition To Pittsburgh Location – Wednesday, September 21st

AIRBUS A-330 TOOLING

Large Selection of A-330 Tooling. Some Are New Others Used Very Little, Includes: Rigging Pins, Installation & Extraction Tools, Control Surface Slings, Brake Tools & Slings, APU Tools, Landing Gear Tools, Exchanger Sling & Hoist, Accessory Tools, Gauges, Alignment Tools, Wrenches, Adapters, Etc. There are Several Hundred Tools All Used For Line Maintenance as Well as C & D Checks. For complete List of Tools Being Sold By Part #, Description & Counts, Visit our Web Site www.starmanauctions.com and Click on Upcoming Auctions & Scroll down to U.S. Air.

AUCTIONEER'S NOTE

U.S. Airways has closed several of their back & shop Shops and have contracted with Starman Bros. Auctions, Inc. to sell certain assets surplus to their ongoing needs at Public Auction. This auction will consist of some very good Overhaul Equipment, Machine Shop Equipment & Ramp Equipment. Everything Sells "AS IS" "WHERE IS" "AS AVAILABLE" "WITH FAULTS" with no warranties implied or expressed. Neither the auctioneer nor the Owners shall be liable for any incorrect, description, fault or defect. Although all information is deemed to be from reliable sources prospective buyers are urged to inspect all items prior to bidding. Everything Positively sells to the highest Bidder. Payment must be made in full day of sale. No property removed until settled for. Auctioneer is not responsible for accidents or stolen property. All counts are subject to change.

PAYMENT TERMS

Cash, Cashiers Checks, Traveler's Checks, Certified Funds or Company Check ONLY IF ACCOMPANIED BY BANK LETTER OF GUARANTEE! NO EXCEPTIONS! Wire transfers will be Accepted with a 20% NON-REFUNDABLE Deposit Made in One of the Forms Listed Above. Payable Day of Sale. We Also Accept MasterCard & Visa. There is an additional Charge of 3% applied to all Credit Card Transactions. This is in addition to the 5% Buyers Premium. EVERYONE Must Make Full Settlement on Day of Sale.

REMOVAL & RIGGING

Once an item is Sold, the winning bidder is responsible for its removal. Any cost, responsibility, and Risk of Removal of Purchases Remain with the purchaser. Removal may begin after payment in full and must be completed by the posted deadline. NO EXCEPTIONS OR EXTENSIONS. Starman Bros. auctions is not a Rigging Company. Various Rigging Companies will be on site to offer Quotes and or do loading. Any Equipment that requires disconnection of any type must be done by rigger. Any riggers used by the purchaser will be required to provide a Certificate of Insurance. It will be the purchaser's/Riggers responsibility to restore/repair all real or personal property that is altered or damaged as a result of the removal.

PROXY BIDS

If you cannot attend this auction, we will bid on your behalf. For Information call Starman Bros. at 402-592-1933 or go to our web site at www.starmanauctions.com and click on Upcoming Auctions, then scroll down to Proxy Bid Form.

NOTE: A 5% BUYERS PREMIUM WILL APPLY TO ALL PURCHASES AT THIS AUCTION.



5 Days **AVIATION AUCTION** **2 Locations**

Equipment Surplus to Ongoing Needs of

U.S AIRWAYS

**Tuesday & Wednesday
September 20 & 21, 2005**
 U.S. Airways Maintenance S.S.B. Building & Hangar #2 Located on Hangar Rd.
PITTSBURGH INTERNATIONAL AIRPORT - PITTSBURGH, PA
 Directions: You Must Enter the Airport From the Southeast Side: Take Business 60 to Hangar Rd. Turn Into Airport & Follow Hangar Rd. to U.S. Air Maintenance Area.
Starting at 9:00 A.M. Both Days
 Pittsburgh Sale Site Phone: 412-472-7404

OPEN HOUSE
Monday, September 19th From 9:00 A.M. to 5:00 P.M. For Pittsburgh Location.
Monday, September 26th From 9:00 A.M. to 5:00 P.M. For the Charlotte, N.C. Location.

**Tuesday, Wednesday & Thursday
September 27, 28 & 29, 2005
CHARLOTTE - NORTH CAROLINA**

**Tuesday & Wednesday
September 27 & 28, 2005**

U.S. Airways Maintenance Hangar
 5000 Hangar Rd., Charlotte Intl. Airport
 Directions: From I-85 Take Billy Graham Pkwy. Airport Exit, Follow Billy Graham to West Blvd. (Hwy. 160) Turn Right Go Yorkmont Rd. Turn Right, Go to Hangar Rd. Turn Left Follow Hangar Rd. to Bottom of Hill to Parking Lot.

Starting at 9:00 A.M. Both Days.
 Charlotte Sale Site Phone: 704-359-2428

Thursday - September 29, 2005

5535 Wilkinson Blvd. - Charlotte, N.C.
 Directions: From I-85 Take Billy Graham Pkwy./Airport Exit, Turn Toward airport Go to Old Dowd Rd. Turn Right Go 1/2 Mile to Harlee Rd. Turn Right Go to Corner of Harlee Rd. & Wilkinson Blvd. & Turn Right into Parking Lot.

Starting at 9:00 A.M.
 Charlotte Sale Site Phone: 704-359-1514

STAR MAN BROS. AUCTIONS INC.

1240 Royal Drive ■ Papillion, NE 68046-2082
 (402) 592-1933

Return Service Requested

PRSRRT FIRST CLASS
 U.S. POSTAGE
PAID
 MAIL U.S.A.

First Class